

GPS SURVEY MARK DESCRIPTION

GIS MAPPING BY:
THE SIDWELL COMPANY
WEST CHICAGO, ILLINOIS

THE OFFICE OF THE
COUNTY ENGINEER
MONROE COUNTY, IOWA

DESIGNATION 731701 1 GPS No. 6040 COUNTY MONROE STATE IOWA

LOCATED IN SECTION 1 TWP 73 N RGE 17 W USGS QUAD MAP BUXTON

TO REACH FROM THE INTERSECTION OF COUNTY ROADS H16 AND T39, NORTH-NORTHEAST OF ALBIA;

GO NORTHERLY 1.0 MILE ON ROAD T39; THEN EAST 0.8 MILE ON T39 TO MARK.

TYPE OF MARK 3-1/4" ALUMINUM DISK SET IN 12" DIAMETER POURED-IN-PLACE CONCRETE MONUMENT.

RECOVERED SET BY DENI ASSOCIATES, INC., FT. MYERS, FL DATE OCTOBER 1996

HORIZONTAL VALUES ORIGINATED ON ORDER "B" IOWA HIGH ACCURACY REFERENCE NETWORK (HARN) CONTROL ESTABLISHED BY THE NATIONAL GEODETIC SURVEY AND BASED ON THE NORTH AMERICAN DATUM OF 1983, 1996 ADJUSTMENT.

IOWA COORDINATE SYSTEM, SOUTH ZONE GRID

SCALE FACTOR: 0.99994860

COORDINATES (US FEET)

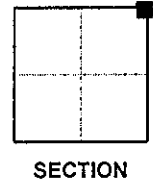
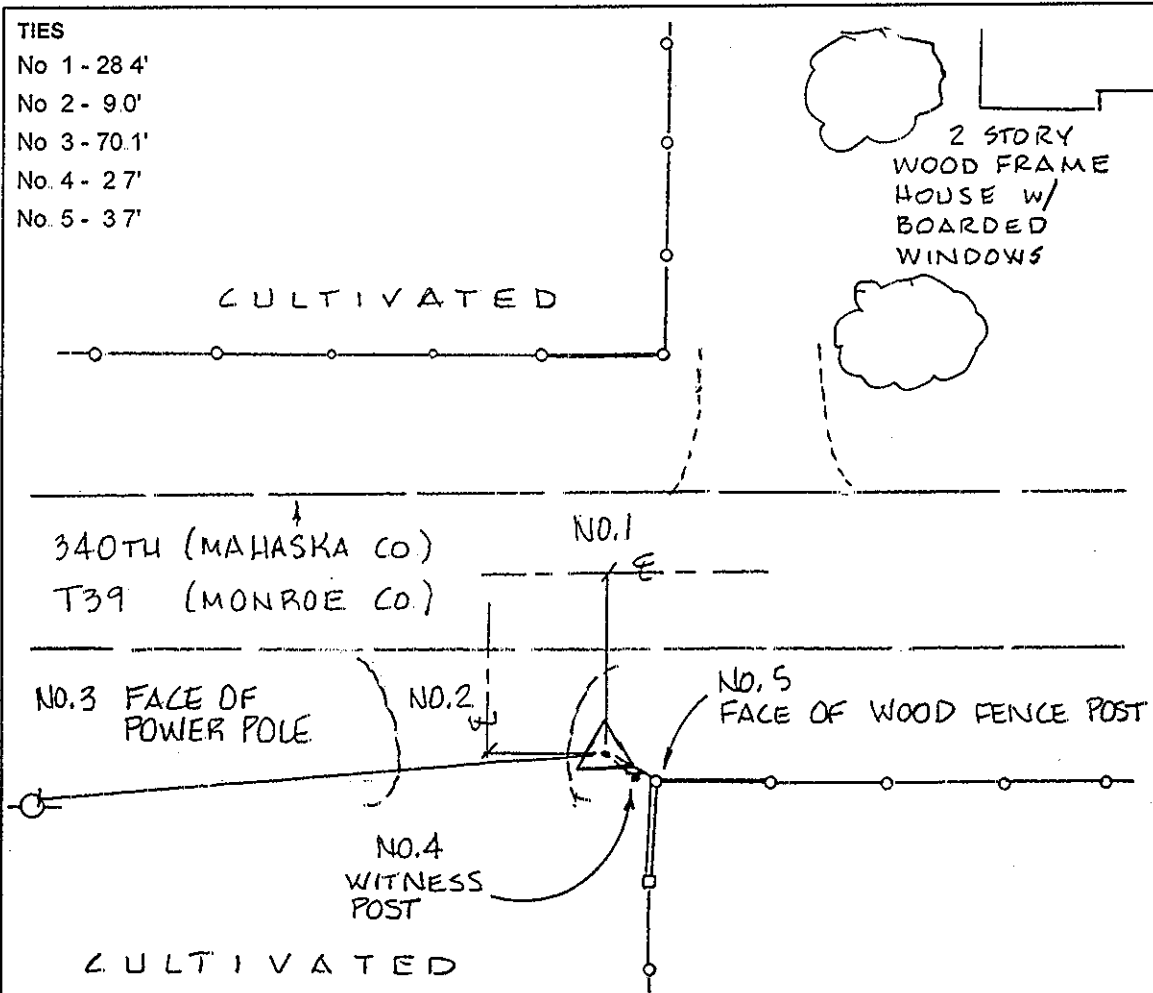
COORDINATES (METERS)

NORTHING (Y) 423963.12

NORTHING (Y) 129224.217

EASTING (X) 1845600.82

EASTING (X) 562540.255



SKETCH
BY DSW
DENI 9609001