

# GPS SURVEY MARK DESCRIPTION

GIS MAPPING BY:  
THE SIDWELL COMPANY  
WEST CHICAGO, ILLINOIS

THE OFFICE OF THE  
COUNTY ENGINEER  
MONROE COUNTY, IOWA

DESIGNATION MONROE GPS No. 9665 COUNTY MONROE STATE IOWA

LOCATED IN SECTION 24 TWP 73 N RGE 16 W USGS QUAD MAP AVERY

TO REACH FROM THE INTERSECTION OF COUNTY ROAD T61 (MONROE - WAPELLO ROAD) AND COUNTY ROAD H21, SOUTH OF EDDYVILLE; GO WEST 0.5 MILE ON H21, TO AN INTERSECTION; THEN NORTH 0.35 MILE TO THE MARK.

DISK IS STAMPED "MONROE 1956"

TYPE OF MARK STANDARD USC&GS BRONZE DISK IN 11" x 11" CONCRETE MONUMENT, PROJECTS 5" ABOVE.

RECOVERED  SET BY DENI ASSOCIATES, INC., FT. MYERS, FL DATE OCTOBER 1996

HORIZONTAL VALUES ORIGINATED ON ORDER "B" IOWA HIGH ACCURACY REFERENCE NETWORK (HARN) CONTROL ESTABLISHED BY THE NATIONAL GEODETIC SURVEY AND BASED ON THE NORTH AMERICAN DATUM OF 1983, 1996 ADJUSTMENT.

IOWA COORDINATE SYSTEM, SOUTH ZONE GRID

SCALE FACTOR: 0.99994964

COORDINATES (US FEET)

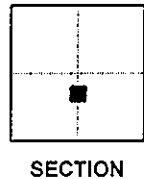
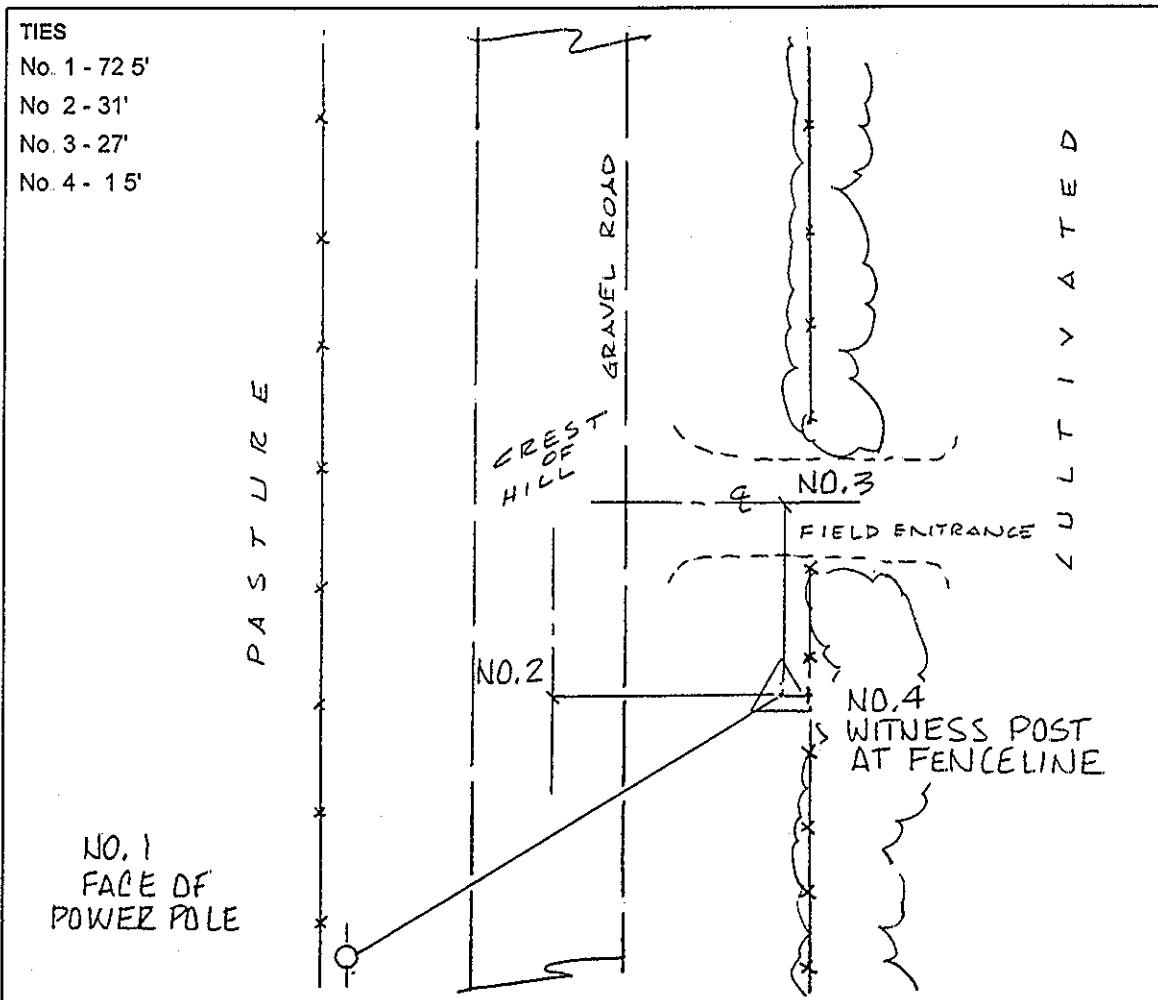
COORDINATES (METERS)

NORTHING (Y) 405221.03

NORTHING (Y) 123511.618

EASTING (X) 1874798.15

EASTING (X) 571439.619



SKETCH

BY DSW

DENI 9609001