

2000
Muscatine County, Iowa
Iowa South Zone (1402)
NAD_83(1996)

Point Number: 107

Northing: 561417.44(Ft) Easting: 2383719.76(Ft)

Northing: 171120.378(M) Easting: 726559.236(M)

Elev: 784.24(Ft) NAVD_88

Elev: 239.038(M) NAVD_88 Ellip Ht: 206.342(M) 96C Geoid Ht: -32.695(M)

Latitude: 41-30-32.749005 N Longitude: 90-47-08.411967 W

Theta: 1-47-16.55 Combination Factor: 0.99993043

Designation: MUSCATINE CO GPS CONTROL PT 2000-107

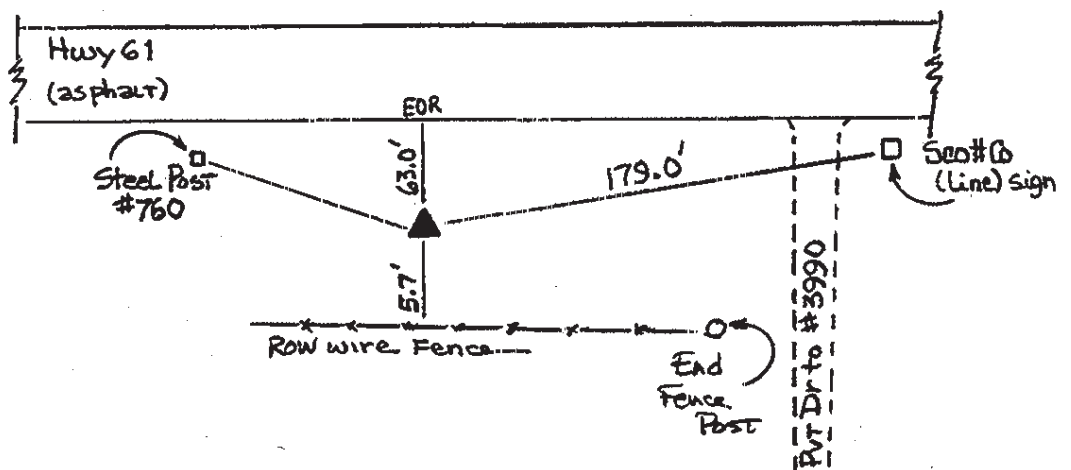
Monument Type: 5/8" dia driven aluminum rod with a 2-1/2" dia aluminum cap and permanent magnet encased in a 5" dia PVC pipe with an aluminum access cover.

To Reach: 125ft W of N/S section line fence, 60ft S of Hwy 61 near the NE cor Sec 1 T77N R1E.

Date Printed August 9, 2000



Set NGS style
rod monument
with access cover



107
BRS/RKE
APRIL 2000