

2000
Muscatine County, Iowa
Iowa South Zone (1402)
NAD_83(1996)

Point Number: 110

Northing: 559448.67(Ft) Easting: 2288729.15(Ft)

Northing: 170520.295(M) Easting: 697606.040(M)

Elev: 619.09(Ft) NAVD_88

Elev: 188.700(M) NAVD_88 Ellip Ht: 156.013(M) 96C Geoid Ht: -32.687(M)

Latitude: 41-30-40.717043 N Longitude: 91-07-57.217024 W

Theta: 1-33-33.97 Combination Factor: 0.99993853

Designation: MUSCATINE CO GPS CONTROL PT 2000-110

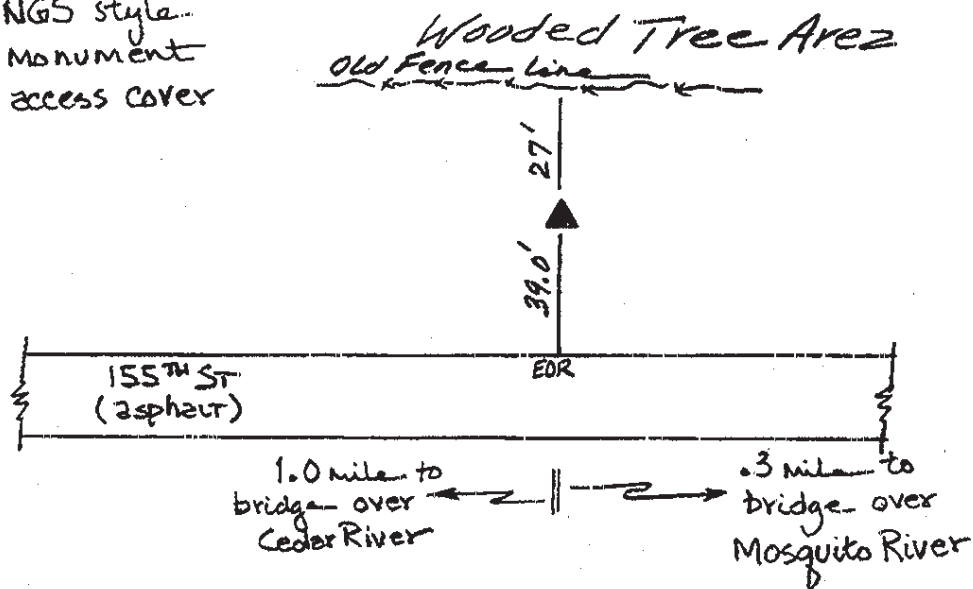
Monument Type: 5/8" dia driven aluminum rod with a 2-1/2" dia aluminum cap and permanent magnet encased in a 5" dia PVC pipe with an aluminum access cover.

To Reach: 35ft N of 155th St, approx. 1.6 mi W of X 54 and 250ft W of field entr to S in the SW 1/4 of Sec 31 T78N R2W.

Date Printed August 9, 2000



Set NGS style
rod monument
with access cover



110
BRS/RKE
APRIL 2000