

2000
Muscatine County, Iowa
Iowa South Zone (1402)
NAD_83(1996)

Point Number: 116

Northing: 545449.65(Ft) Easting: 2318205.52(Ft)

Northing: 166253.387(M) Easting: 706590.457(M)

Elev: 643.41(Ft) NAVD_88

Elev: 196.111(M) NAVD_88 Ellip Ht: 163.377(M) 96C Geoid Ht: -32.735(M)

Latitude: 41-28-14.354828 N Longitude: 91-01-35.154022 W

Theta: 1-37-45.63 Combination Factor: 0.99993379

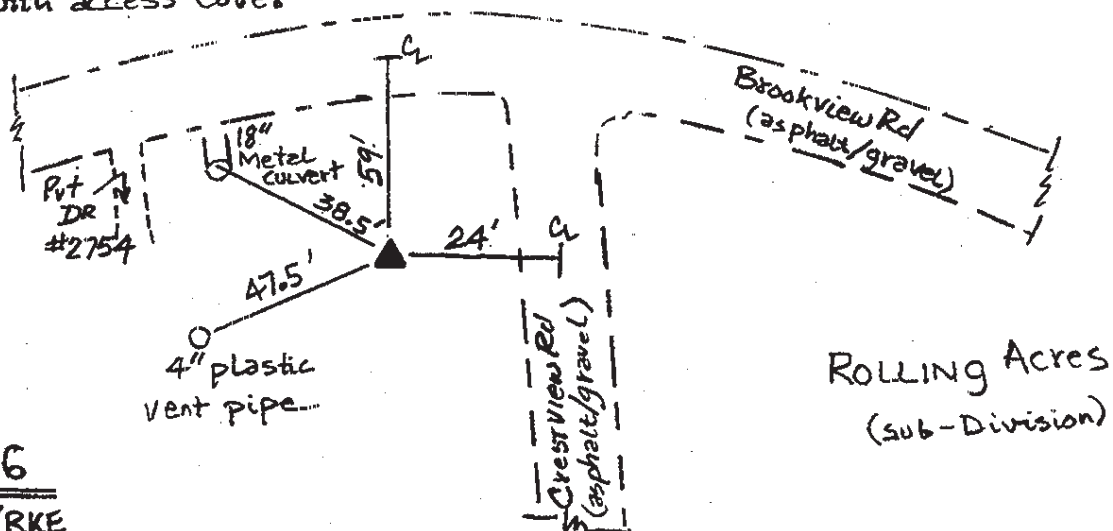
Designation: MUSCATINE CO GPS CONTROL PT 2000-116

Monument Type: 5/8" dia driven aluminum rod with a 2-1/2" dia aluminum cap and permanent magnet encased in a 5" dia PVC pipe with an aluminum access cover.

To Reach: 60ft S of Brookview Rd, 25ft W of Crestview Rd, near the center of Sec 13 T77N R2W.

Date Printed August 9, 2000

Set NGS style
rod monument
with access cover



116
BRS/RKE
APRIL 2000