

2000
Muscatine County, Iowa
Iowa South Zone (1402)
NAD_83(1996)

Point Number: 117

Northing: 545880.02(Ft) Easting: 2323659.80(Ft)

Northing: 166384.562(M) Easting: 708252.924(M)

Elev: 639.85(Ft) NAVD_88

Elev: 195.027(M) NAVD_88 Ellip Ht: 162.294(M) 96C Geoid Ht: -32.733(M)

Latitude: 41-28-17.066762 N Longitude: 91-00-23.372344 W

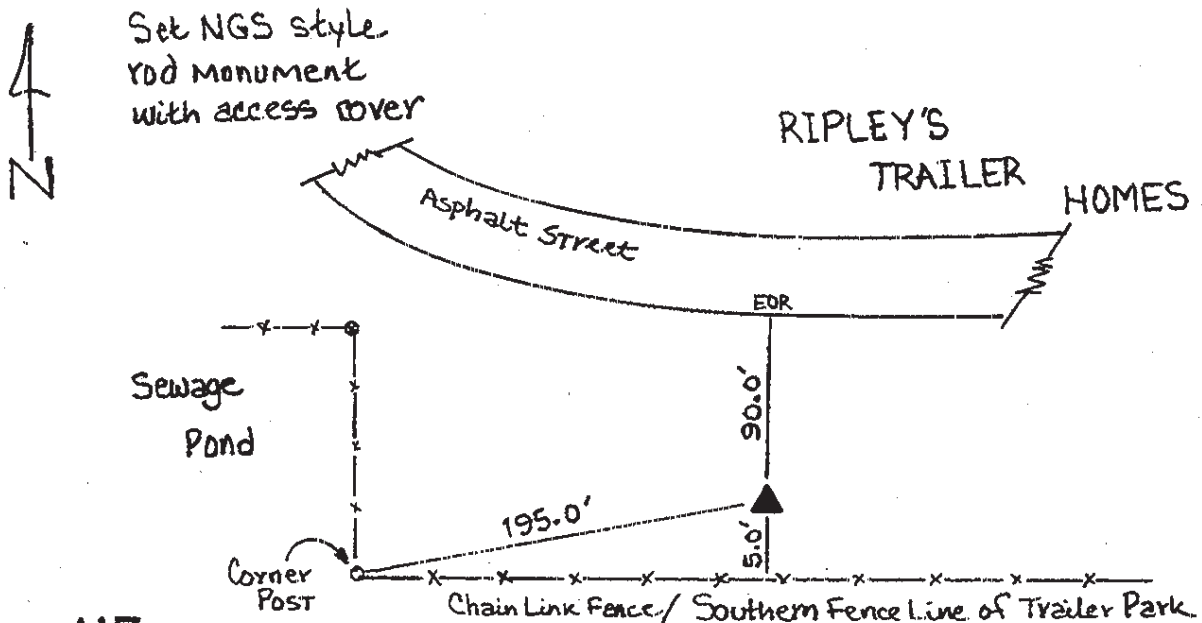
Theta: 1-38-32.91 Combination Factor: 0.99993402

Designation: MUSCATINE CO GPS CONTROL PT 2000-117

Monument Type: 5/8" dia driven aluminum rod with a 2-1/2" dia aluminum cap and permanent magnet encased in a 5" dia PVC pipe with an aluminum access cover.

To Reach: 90ft S of road near SW cor of Trailer Park off Hwy 61 near sewage pond perimeter fence in the NE 1/4 Sec 18 T77N R1W.

Date Printed August 9, 2000



117
BRS/RKE
APRIL 2000

Adjacent to property of: Standard Asphalt Inc
and K&P Construction.