

2000
Muscatine County, Iowa
Iowa South Zone (1402)
NAD_83(1996)

Point Number: 122

Northing: 537524.78(Ft) Easting: 2296603.65(Ft)

Northing: 163837.880(M) Easting: 700006.193(M)

Elev: 710.86(Ft) NAVD_88

Elev: 216.670(M) NAVD_88 Ellip Ht: 183.916(M) 96C Geoid Ht: -32.754(M)

Latitude: 41-27-02.056790 N Longitude: 91-06-21.680339 W

Theta: 1-34-36.90 Combination Factor: 0.99992898

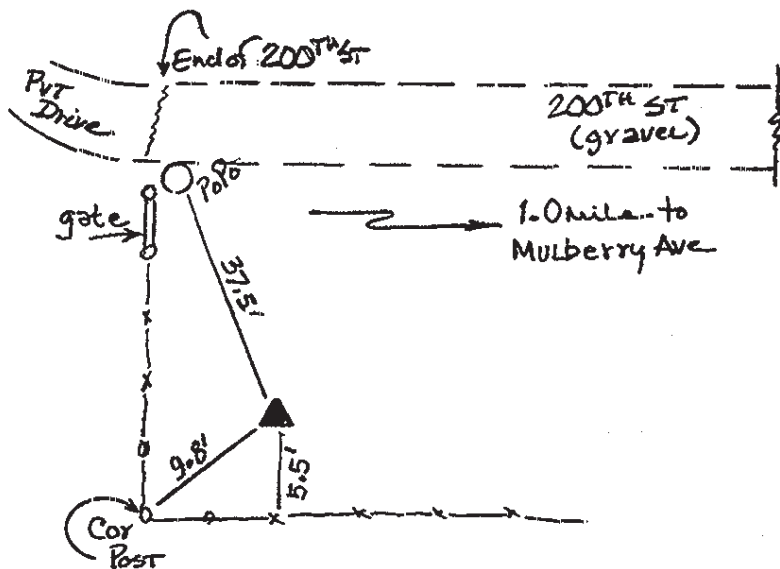
Designation: MUSCATINE CO GPS CONTROL PT 2000-122

Monument Type: 5/8" dia driven aluminum rod with a 2-1/2" dia aluminum cap and permanent magnet encased in a 5" dia PVC pipe with an aluminum access cover.

To Reach: 35ft S of 200th St at dead end of road near the S 1/4 cor Sec 20 T77N R2W.

Date Printed August 9, 2000

4
N
Set NGS style
rod monument
with access cover



122
BRS/RKE
APRIL 2000