

2000
Muscatine County, Iowa
Iowa South Zone (1402)
NAD_83(1996)

Point Number: 126

Northing: 542778.93(Ft) Easting: 2368207.89(Ft)

Northing: 165439.347(M) Easting: 721831.209(M)

Elev: 557.14(Ft) NAVD_88

Elev: 169.815(M) NAVD_88 Ellip Ht: 137.076(M) 96C Geoid Ht: -32.739(M)

Latitude: 41-27-33.414860 N Longitude: 90-50-39.683908 W

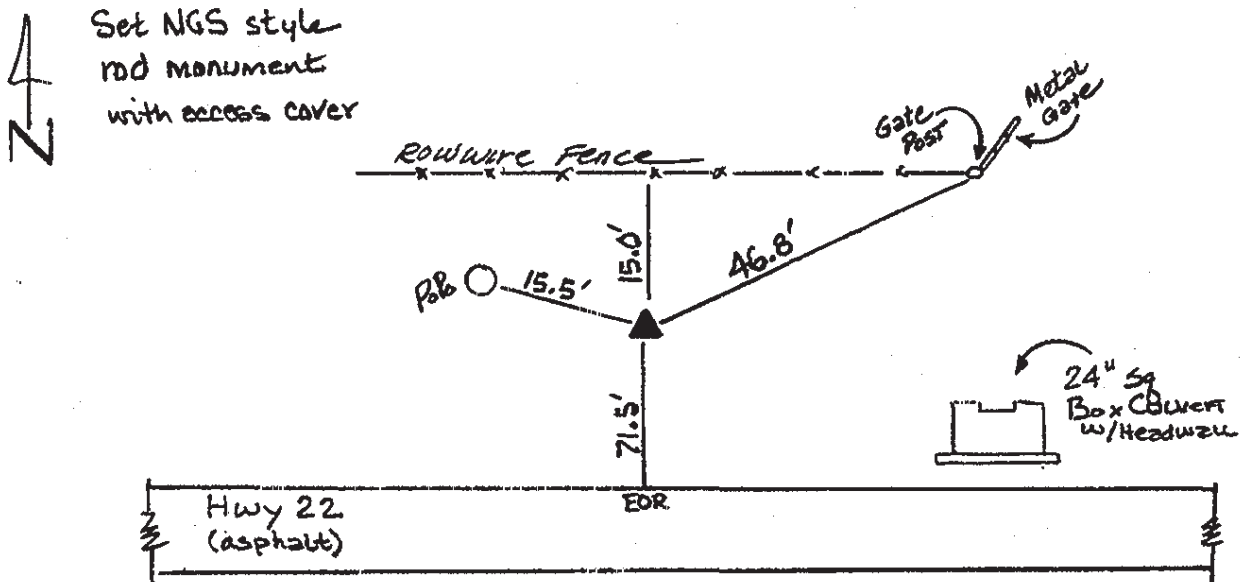
Theta: 1-44-57.39 Combination Factor: 0.99993700

Designation: MUSCATINE CO GPS CONTROL PT 2000-126

Monument Type: 5/8" dia driven aluminum rod with a 2-1/2" dia aluminum cap and permanent magnet encased in a 5" dia PVC pipe with an aluminum access cover.

To Reach: 70ft N of Hwy 22 near the section line fence to N near the E 1/4 cor Sec 21 T77N R1E.

Date Printed August 9, 2000



126
BRS/RKE
APRIL 2000