

2000
Muscatine County, Iowa
Iowa South Zone (1402)
NAD_83(1996)

Point Number: 128

Northing: 531914.36(Ft) Easting: 2290568.26(Ft)

Northing: 162127.820(M) Easting: 698166.601(M)

Elev: 723.90(Ft) NAVD_88

Elev: 220.645(M) NAVD_88 Ellip Ht: 187.874(M) 96C Geoid Ht: -32.772(M)

Latitude: 41-26-08.278299 N Longitude: 91-07-42.917802 W

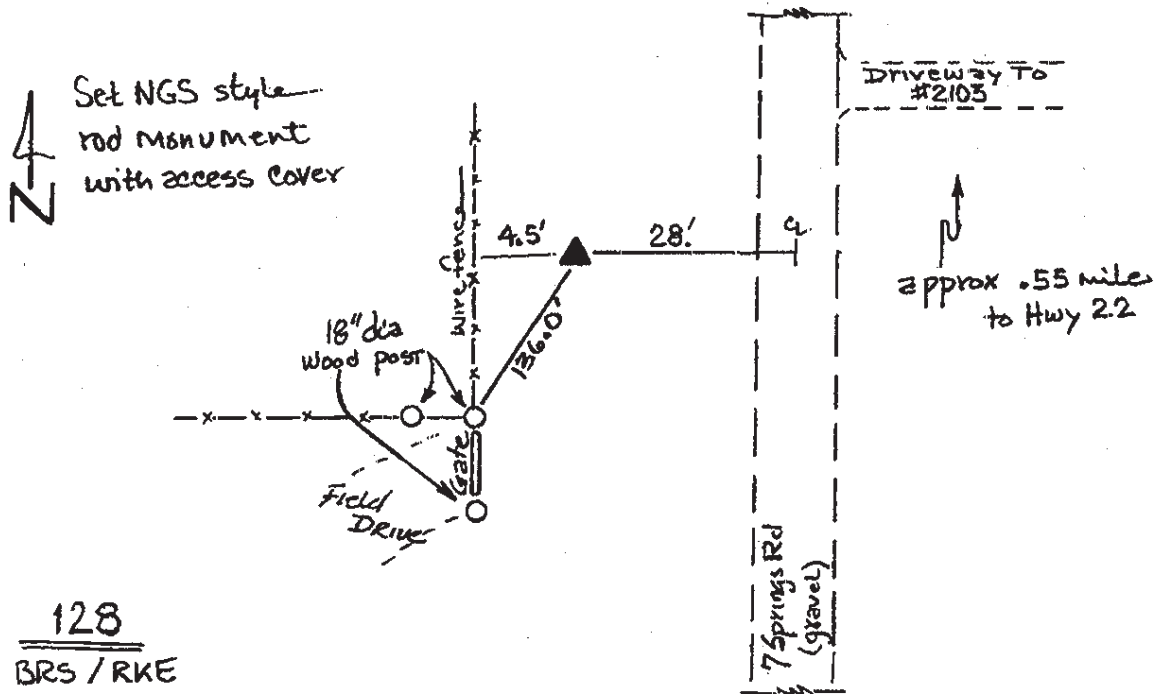
Theta: 1-33-43.38 Combination Factor: 0.99992726

Designation: MUSCATINE CO GPS CONTROL PT 2000-128

Monument Type: 5/8" dia driven aluminum rod with a 2-1/2" dia aluminum cap and permanent magnet encased in a 5" dia PVC pipe with an aluminum access cover.

To Reach: Approx. 0.55 mi S of Hwy 22, 25ft W of 7 Springs Rd, 125ft N of field entr to the E & W, near the S 1/4 cor Sec 30 T77N R2W.

Date Printed August 9, 2000



128
BRS / RKE
APRIL 2000