

2000
Muscatine County, Iowa
Iowa South Zone (1402)
NAD_83(1996)

Point Number: 129

Northing: 532306.40(Ft) Easting: 2296477.52(Ft)

Northing: 162247.314(M) Easting: 699967.749(M)

Elev: 671.68(Ft) NAVD_88

Elev: 204.729(M) NAVD_88 Ellip Ht: 171.957(M) 96C Geoid Ht: -32.772(M)

Latitude: 41-26-10.551502 N Longitude: 91-06-25.221151 W

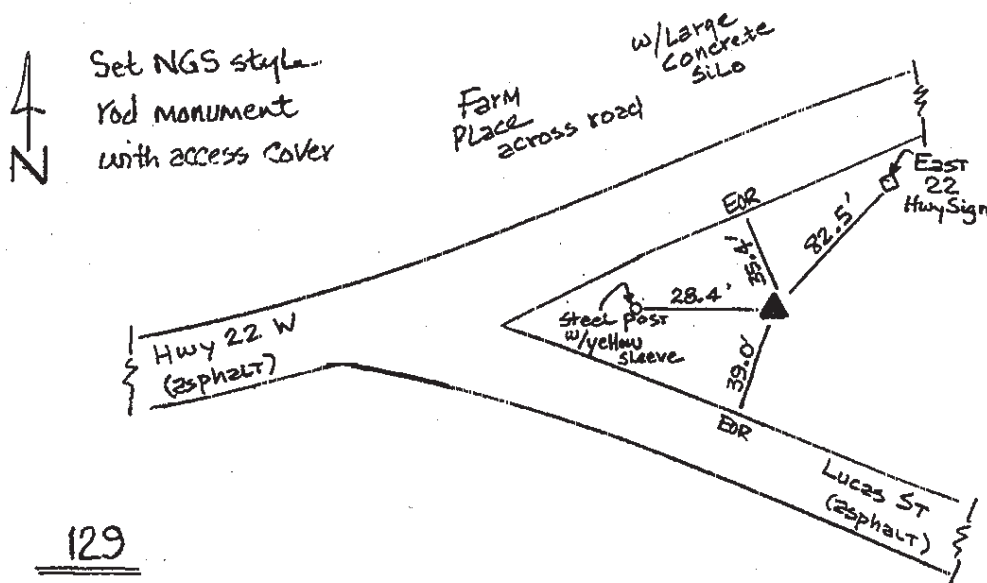
Theta: 1-34-34.56 Combination Factor: 0.99992980

Designation: MUSCATINE CO GPS CONTROL PT 2000-129

Monument Type: 5/8" dia driven aluminum rod with a 2-1/2" dia aluminum cap and permanent magnet encased in a 5" dia PVC pipe with an aluminum access cover.

To Reach: 40ft NE of Lucas St, on line with extended CL of Hwy 22 to the E, in the SE 1/4 of Sec 29 T77N R2W

Date Printed August 9, 2000.



129
BRS/RKE
APRIL 2000