

2000
Muscatine County, Iowa
Iowa South Zone (1402)
NAD_83(1996)

Point Number: 131

Northing: 526383.13(Ft) Easting: 2289459.09(Ft)

Northing: 160441.900(M) Easting: 697828.527(M)

Elev: 606.93(Ft) NAVD_88

Elev: 184.992(M) NAVD_88 Ellip Ht: 152.202(M) 96C Geoid Ht: -32.790(M)

Latitude: 41-25-13.946750 N Longitude: 91-07-59.450751 W

Theta: 1-33-32.49 Combination Factor: 0.99993181

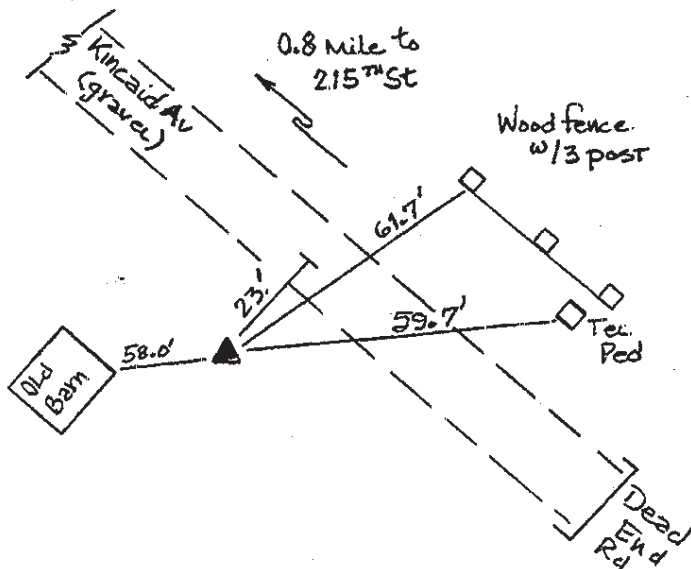
Designation: MUSCATINE CO GPS CONTROL PT 2000-131

Monument Type: 5/8" dia driven aluminum rod with a 2-1/2" dia aluminum cap and permanent magnet encased in a 5" dia PVC pipe with an aluminum access cover.

To Reach: 20ft SW of Kincaid Ave, near its dead end, and approx. 55ft E of an old barn, in the NW 1/4 of Sec 6 T77N R2W.

Date Printed August 9, 2000

Set NGS style
rod monument
with access cover



131
BRS/RKE
APRIL 2000