

2000
Muscatine County, Iowa
Iowa South Zone (1402)
NAD_83(1996)

Point Number: 141

Northing: 505718.76(Ft) Easting: 2299768.90(Ft)

Northing: 154143.387(M) Easting: 700970.962(M)

Elev: 543.99(Ft) NAVD_88

Elev: 165.808(M) NAVD_88 Ellip Ht: 132.962(M) 96C Geoid Ht: -32.847(M)

Latitude: 41-21-47.058848 N Longitude: 91-05-51.663546 W

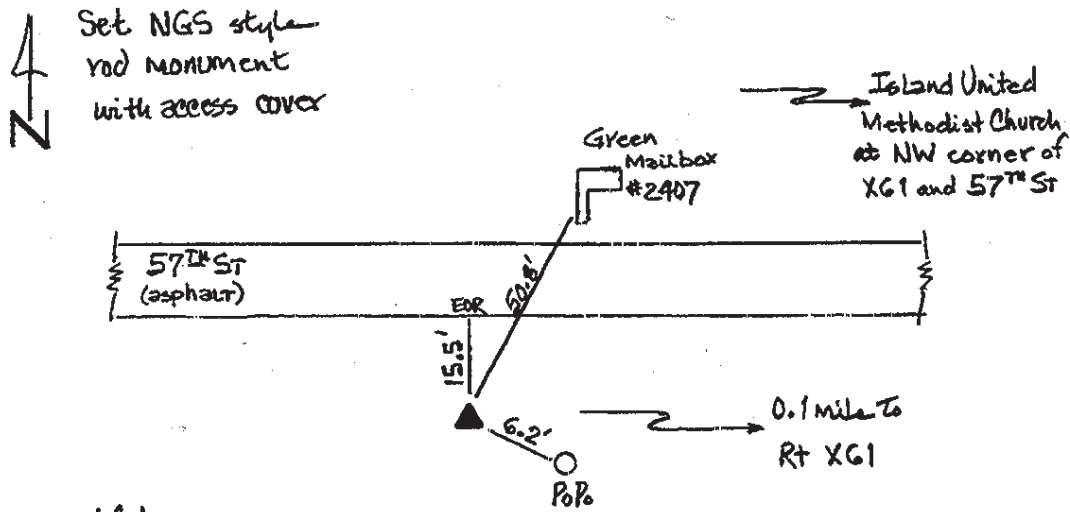
Theta: 1-34-56.67 Combination Factor: 0.99993150

Designation: MUSCATINE CO GPS CONTROL PT 2000-141

Monument Type: 5/8" dia driven aluminum rod with a 2-1/2" dia aluminum cap and permanent magnet encased in a 5" dia PVC pipe with an aluminum access cover.

To Reach: 15ft S of 57th St S, 0.1 mi W of "X 61" near the SW cor Sec 21 T76N R2W.

Date Printed August 9, 2000



141
BRS/RKE
APRIL 2000