

2000
Muscatine County, Iowa
Iowa South Zone (1402)
NAD_83(1996)

Point Number: 143

Northing: 502962.74(Ft) Easting: 2294204.70(Ft)

Northing: 153303.349(M) Easting: 699274.990(M)

Elev: 548.92(Ft) NAVD_88

Elev: 167.311(M) NAVD_88 Ellip Ht: 134.458(M) 96C Geoid Ht: -32.853(M)

Latitude: 41-21-21.349969 N Longitude: 91-07-05.598870 W

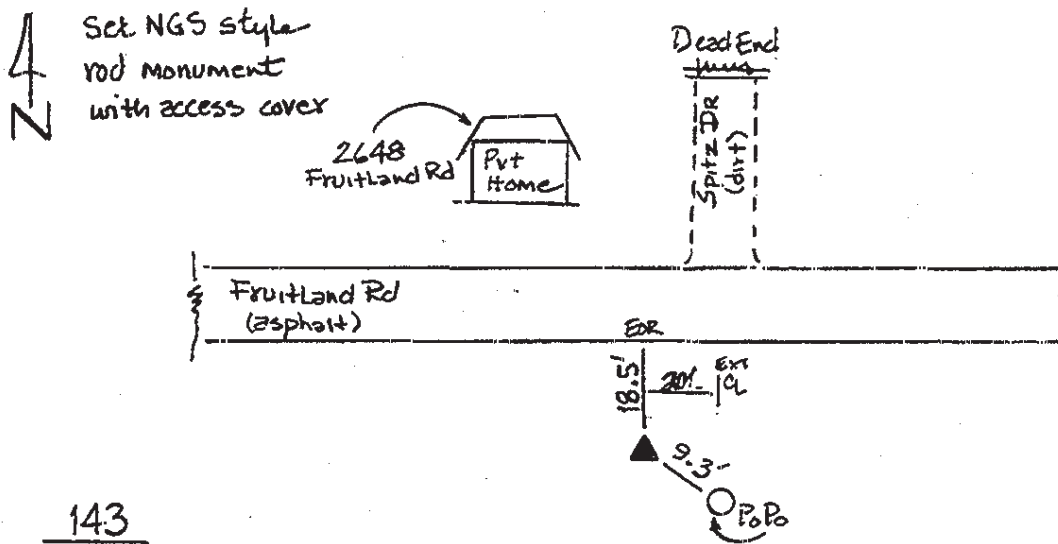
Theta: 1-34-07.97 Combination Factor: 0.99993092

Designation: MUSCATINE CO GPS CONTROL PT 2000-143

Monument Type: 5/8" dia driven aluminum rod with a 2-1/2" dia aluminum cap and permanent magnet encased in a 5" dia PVC pipe with an aluminum access cover.

To Reach: 20ft S of Fruitland Rd, 20ft W of extended CL of Spitz Rd, near the W 1/4 cor of Sec 29 T76N R2W.

Date Printed August 9, 2000



143
BRS/RKE
APRIL 2000