

2000
Muscatine County, Iowa
Iowa South Zone (1402)
NAD_83(1996)

Point Number: 147

Northing: 497240.82(Ft) Easting: 2257120.09(Ft)

Northing: 151559.304(M) Easting: 687971.578(M)

Elev: 685.38(Ft) NAVD_88

Elev: 208.906(M) NAVD_88 Ellip Ht: 176.068(M) 96C Geoid Ht: -32.838(M)

Latitude: 41-20-34.581008 N Longitude: 91-15-13.676601 W

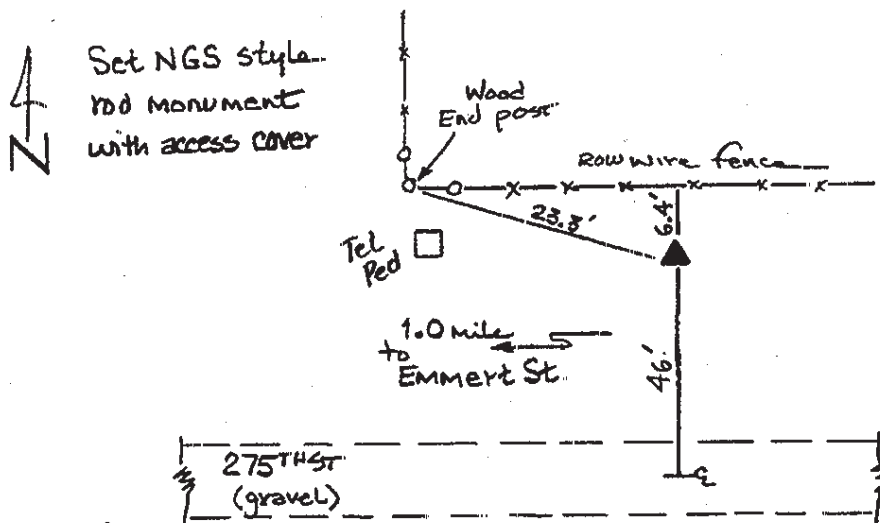
Theta: 1-28-46.47 Combination Factor: 0.99992381

Designation: MUSCATINE CO GPS CONTROL PT 2000-147

Monument Type: 5/8" dia driven aluminum rod with a 2-1/2" dia aluminum cap and permanent magnet encased in a 5" dia PVC pipe with an aluminum access cover.

To Reach: 45ft N of 275th St., 20ft E of N/S section line fence, near the W 1/4 cor Sec 31 T76N R3W.

Date Printed August 9, 2000



147
BRS/RKE
APRIL 2000