

2000
Muscatine County, Iowa
Iowa South Zone (1402)
NAD_83(1996)

Point Number: 302

Northing: 537695.19(Ft) Easting: 2300810.39(Ft)

Northing: 163889.823(M) Easting: 701288.408(M)

Elev: 718.79(Ft) NAVD_88

Elev: 219.088(M) NAVD_88 Ellip Ht: 186.333(M) 96C Geoid Ht: -32.755(M)

Latitude: 41-27-02.592453 N Longitude: 91-05-26.395537 W

Theta: 1-35-13.31 Combination Factor: 0.99992861

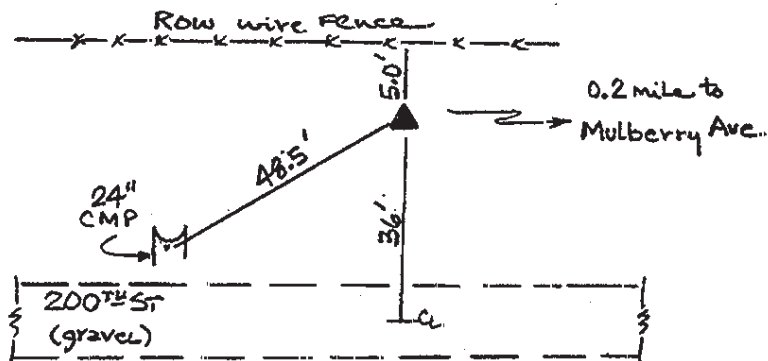
Designation: CITY OF MUSCATINE GPS CONTROL PT 2000-302

Monument Type: 5/8" dia driven aluminum rod with a 2-1/2" dia aluminum cap and permanent magnet encased in a 5" dia PVC pipe with an aluminum access cover.

To Reach: 35ft N of 200th St., approx. 0.2 mi W of N Mulberry Ave near the S 1/4 cor Sec 21 T77N R2W.

Date Printed August 9, 2000

Set NGS style-
rod monument
with access cover



302
BRS/RKE
APRIL 2000