

2000
Muscatine County, Iowa
Iowa South Zone (1402)
NAD_83(1996)

Point Number: 308

Northing: 532484.13(Ft) Easting: 2305999.70(Ft)

Northing: 162301.488(M) Easting: 702870.114(M)

Elev: 712.10(Ft) NAVD_88

Elev: 217.048(M) NAVD_88 Ellip Ht: 184.276(M) 96C Geoid Ht: -32.772(M)

Latitude: 41-26-09.700178 N Longitude: 91-04-20.184168 W

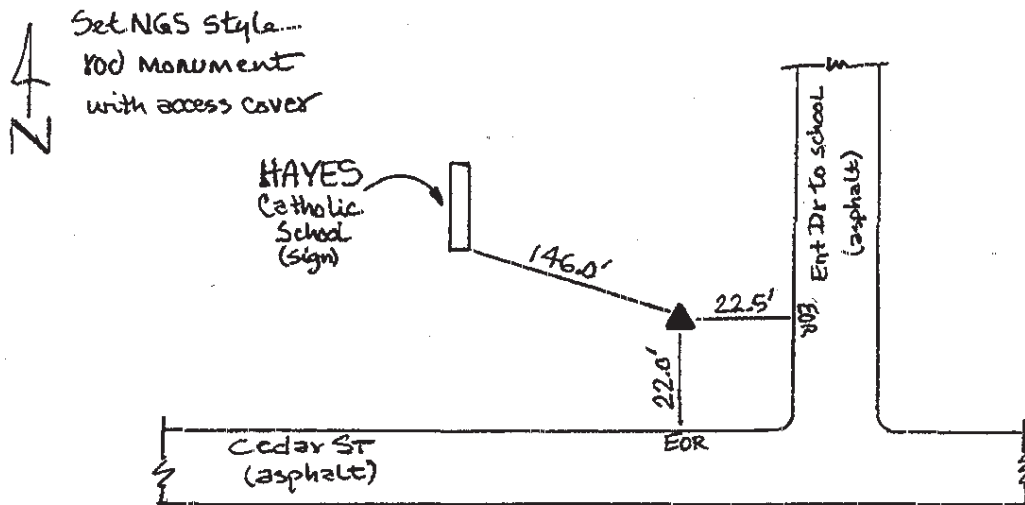
Theta: 1-35-56.93 Combination Factor: 0.99992785

Designation: CITY OF MUSCATINE GPS CONTROL PT 2000-308

Monument Type: 5/8" dia driven aluminum rod with a 2-1/2" dia aluminum cap and permanent magnet encased in a 5" dia PVC pipe with an aluminum access cover.

To Reach: 20ft N of Cedar St. in the front of Hayes Catholic School, 25ft W of E entr to school, approx. 200ft W Imperial Oaks St, near the S 1/4 cor Sec 27 T77N R2W.

Date Printed August 9, 2000



308
BRS/RKE
APRIL 2000