

2000
Muscatine County, Iowa
Iowa South Zone (1402)
NAD_83(1996)

Point Number: 314

Northing: 527792.23(Ft) Easting: 2304209.54(Ft)

Northing: 160871.393(M) Easting: 702324.472(M)

Elev: 684.44(Ft) NAVD_88

Elev: 208.618(M) NAVD_88 Ellip Ht: 175.831(M) 96C Geoid Ht: -32.787(M)

Latitude: 41-25-23.853552 N Longitude: 91-04-45.392848 W

Theta: 1-35-40.32 Combination Factor: 0.99992829

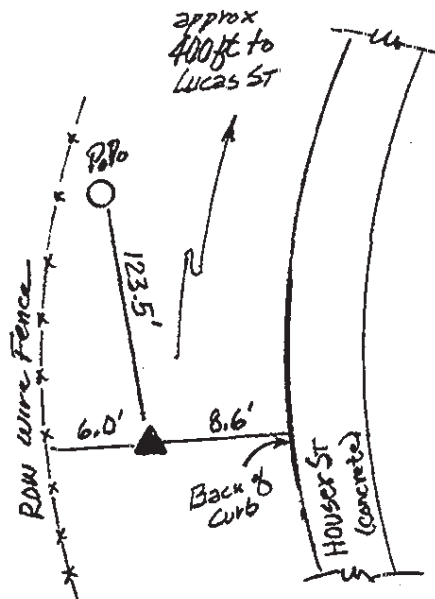

Designation: CITY OF MUSCATINE GPS CONTROL PT 2000-314

Monument Type: 5/8" dia driven aluminum rod with a 2-1/2" dia aluminum cap and permanent magnet encased in a 5" dia PVC pipe with an aluminum access cover.

To Reach: 10ft W of Houser St, 400ft S of Lucas St, near the SW cor Sec 34 T77N R2W.

Date Printed August 9, 2000

Set NGS style
rod monument
with access cover



314
BRS/RKE
APRIL 2000