

2000  
Muscatine County, Iowa  
Iowa South Zone (1402)  
NAD\_83(1996)

Point Number: 320

Northing: 516386.16(Ft)      Easting: 2298710.55(Ft)

Northing: 157394.817(M)      Easting: 700648.377(M)

Elev: 538.35(Ft) NAVD\_88

Elev: 164.089(M) NAVD\_88      Ellip Ht: 131.266(M)      96C Geoid Ht: -32.823(M)

Latitude: 41-23-32.705893 N      Longitude: 91-06-01.679406 W

Theta: 1-34-50.07      Combination Factor: 0.99993334


Designation: CITY OF MUSCATINE GPS CONTROL PT 2000-320

**Monument Type:** 5/8" dia driven aluminum rod with a 2-1/2" dia aluminum cap and permanent magnet encased in a 5" dia PVC pipe with an aluminum access cover.

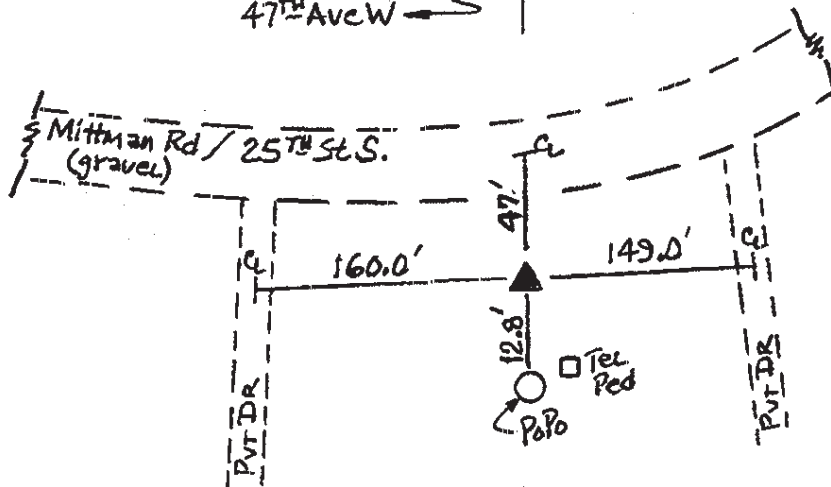
**To Reach:** 45ft S of Mittman Rd, 100ft W of extended CL of Mittman Rd to N, near the SE cor Sec 8 T76N R2W.

Date Printed August 9, 2000

Set NGS style  
rod monument  
with access cover



0.2 mile to  
47<sup>TH</sup> Ave W →



320  
BRS/RXE  
APRIL 2000