

2000
Muscatine County, Iowa
Iowa South Zone (1402)
NAD_83(1996)

Point Number: 322

Northing: 516980.23(Ft) Easting: 2310849.71(Ft)

Northing: 157575.890(M) Easting: 704348.402(M)

Elev: 546.67(Ft) NAVD_88

Elev: 166.625(M) NAVD_88 Ellip Ht: 133.808(M) 96C Geoid Ht: -32.817(M)

Latitude: 41-23-35.234488 N Longitude: 91-03-22.249904 W

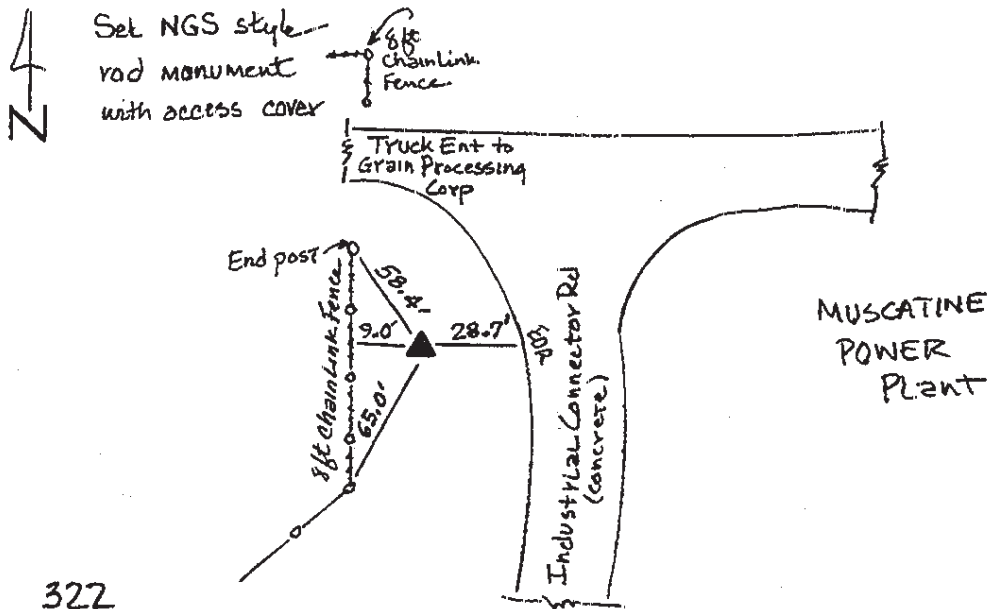
Theta: 1-36-35.09 Combination Factor: 0.99993299

Designation: CITY OF MUSCATINE GPS CONTROL PT 2000-322

Monument Type: 5/8" dia driven aluminum rod with a 2-1/2" dia aluminum cap and permanent magnet encased in a 5" dia PVC pipe with an aluminum access cover.

To Reach: At dead end of entr rd to Muscatine Power Plant, 40ft E of rd near perimeter fence in the NW 1/4 of Sec 14 T76N R2W.

Date Printed August 9, 2000



322
BRS/RKE
APRIL 2000