

2000
Muscatine County, Iowa
Iowa South Zone (1402)
NAD_83(1996)

Point Number: 325

Northing: 510997.67(Ft) Easting: 2293883.96(Ft)

Northing: 155752.400(M) Easting: 699177.230(M)

Elev: 542.37(Ft) NAVD_88

Elev: 165.316(M) NAVD_88 Ellip Ht: 132.480(M) 96C Geoid Ht: -32.835(M)

Latitude: 41-22-40.795797 N Longitude: 91-07-06.918889 W

Theta: 1-34-07.10 Combination Factor: 0.99993234

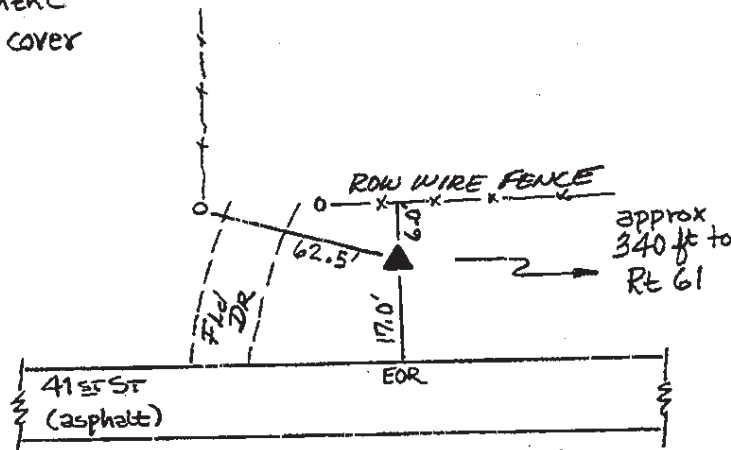
Designation: CITY OF MUSCATINE GPS CONTROL PT 2000-325

Monument Type: 5/8" dia driven aluminum rod with a 2-1/2" dia aluminum cap and permanent magnet encased in a 5" dia PVC pipe with an aluminum access cover.

To Reach: 20ft N of 41st St S, 65ft E of section line fence to N, near the SE cor Sec 18 T76N R2W.

Date Printed August 9, 2000

Set NGS style
rod monument
with access cover



325
BR5/RKE
APRIL 2000