

2000  
Muscatine County, Iowa  
Iowa South Zone (1402)  
NAD\_83(1996)

Point Number: 326

Northing: 511038.99(Ft)      Easting: 2299104.66(Ft)

Northing: 155764.996(M)      Easting: 700768.500(M)

Elev: 545.63(Ft) NAVD\_88

Elev: 166.308(M) NAVD\_88      Ellip Ht: 133.473(M)      96C Geoid Ht: -32.835(M)

Latitude: 41-22-39.786277 N      Longitude: 91-05-58.446351 W

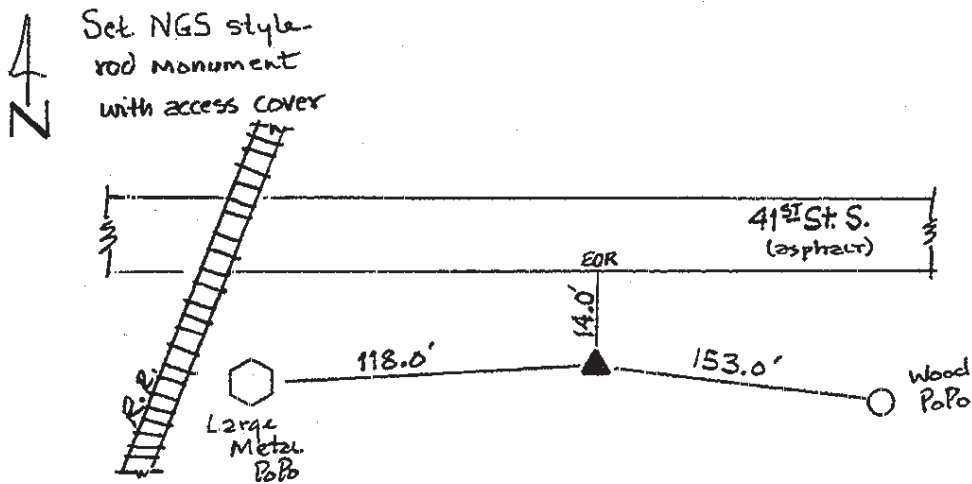
Theta: 1-34-52.20      Combination Factor: 0.99993217

Designation: CITY OF MUSCATINE GPS CONTROL PT 2000-326

**Monument Type:** 5/8" dia driven aluminum rod with a 2-1/2" dia aluminum cap and permanent magnet encased in a 5" dia PVC pipe with an aluminum access cover

**To Reach:** 15ft S of 41st St S, 150ft E of Chicago, R.I., & Pacific R.R. track crossing, near the SW cor Sec 16 T76N R2W.

Date Printed August 9, 2000



326  
BRS / RKE  
APRIL 2000