

2000
Muscatine County, Iowa
Iowa South Zone (1402)
NAD_83(1996)

Point Number: 329

Northing: 505648.39(Ft) Easting: 2293921.38(Ft)

Northing: 154121.938(M) Easting: 699188.636(M)

Elev: 547.64(Ft) NAVD_88

Elev: 166.923(M) NAVD_88 Ellip Ht: 134.076(M) 96C Geoid Ht: -32.847(M)

Latitude: 41-21-47.952224 N Longitude: 91-07-08.348767 W

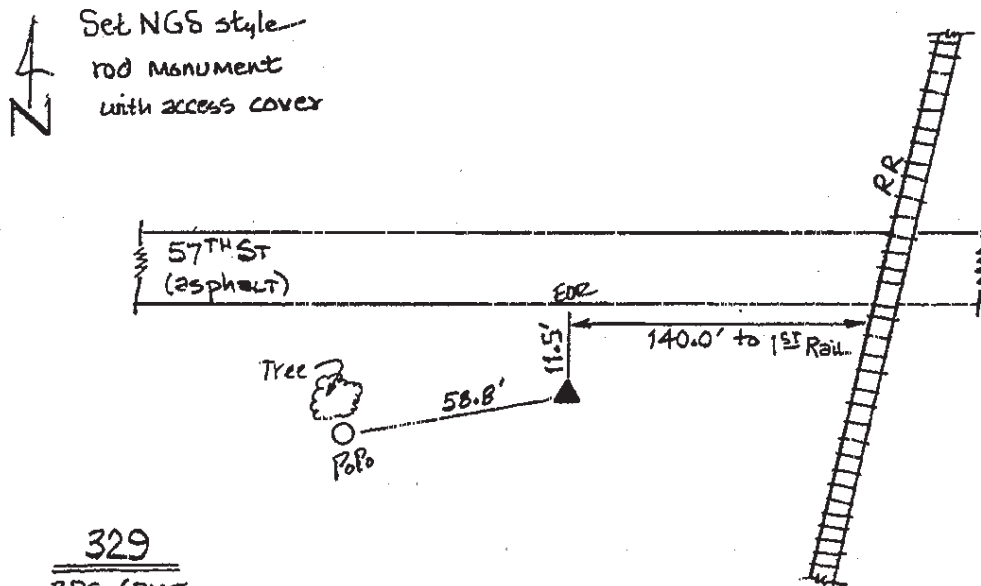
Theta: 1-34-06.16 Combination Factor: 0.99993134

Designation: CITY OF MUSCATINE GPS CONTROL PT 2000-329

Monument Type: 5/8" dia driven aluminum rod with a 2-1/2" dia aluminum cap and permanent magnet encased in a 5" dia PVC pipe with an aluminum access cover.

To Reach: 15ft S of 57th St., approx. 140ft NW of R.R. very near NW cor Sec 29 T76N R2W.

Date Printed August 9, 2000



329
BRS/RKE
APRIL 2000