

2000
Muscatine County, Iowa
Iowa South Zone (1402)
NAD_83(1996)

Point Number: 73

Northing: 546868.80(Ft) Easting: 2224697.06(Ft)

Northing: 166685.945(M) Easting: 678089.020(M)

Elev: 663.40(Ft) NAVD_88

Elev: 202.206(M) NAVD_88 Ellip Ht: 169.532(M) 96C Geoid Ht: -32.674(M)

Latitude: 41-28-52.830597 N Longitude: 91-22-02.687327 W

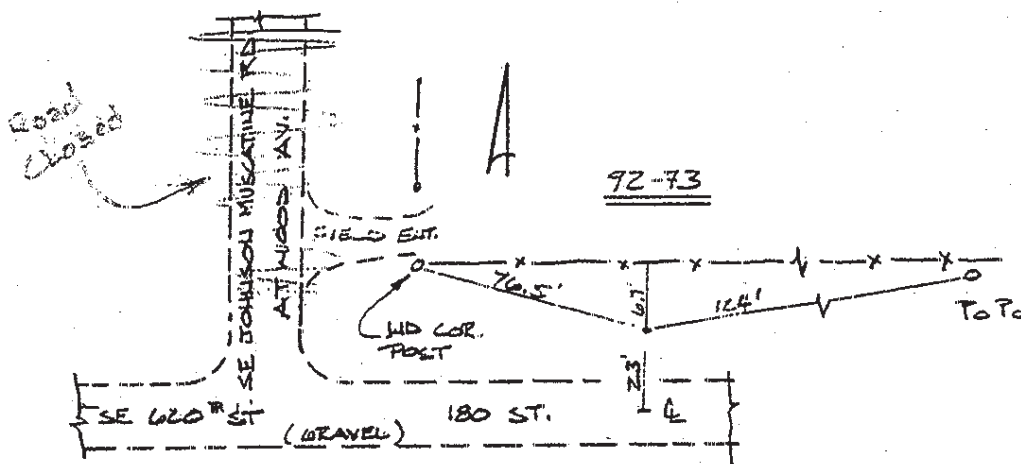
Theta: 1-24-17.05 Combination Factor: 0.99993372

Designation: JOHNSON CO GPS CONTROL PT 92-73

Monument Type: 5/8" dia driven aluminum rod with a 2-1/2" dia aluminum cap and permanent magnet encased in a 5" dia PVC pipe with an aluminum access cover.

To Reach: 25ft N of 180th St., near Johnson/Muscatine county line, near the SW cor Sec 7 T77N R5W.

Date Printed August 9, 2000



STATION IS NEAR THE
SW COR OF SEC 7
T 77 N , R 5 W.