

**Muscatine County, Iowa**

Horizontal Datum: **NAD 83(2011)** - Vertical Datum: **NAVD 1988**

Iowa State Plane South Zone (1402)

Iowa Regional Coordinate System Zone 14 Burlington

US Survey Feet

**2014**

Point Name: **3**

**Designation:** Louisa Co. GPS Control Pt 2006-003 (Set by DCI in 2006)

NAD 83(NA2011) Latitude: **N41°19'41.02805"** Longitude: **W91°18'51.23228"**

NAVD 88 Ortho Height: **672.390sft** Ellip. Ht: **564.373sft** **Geoid12A**

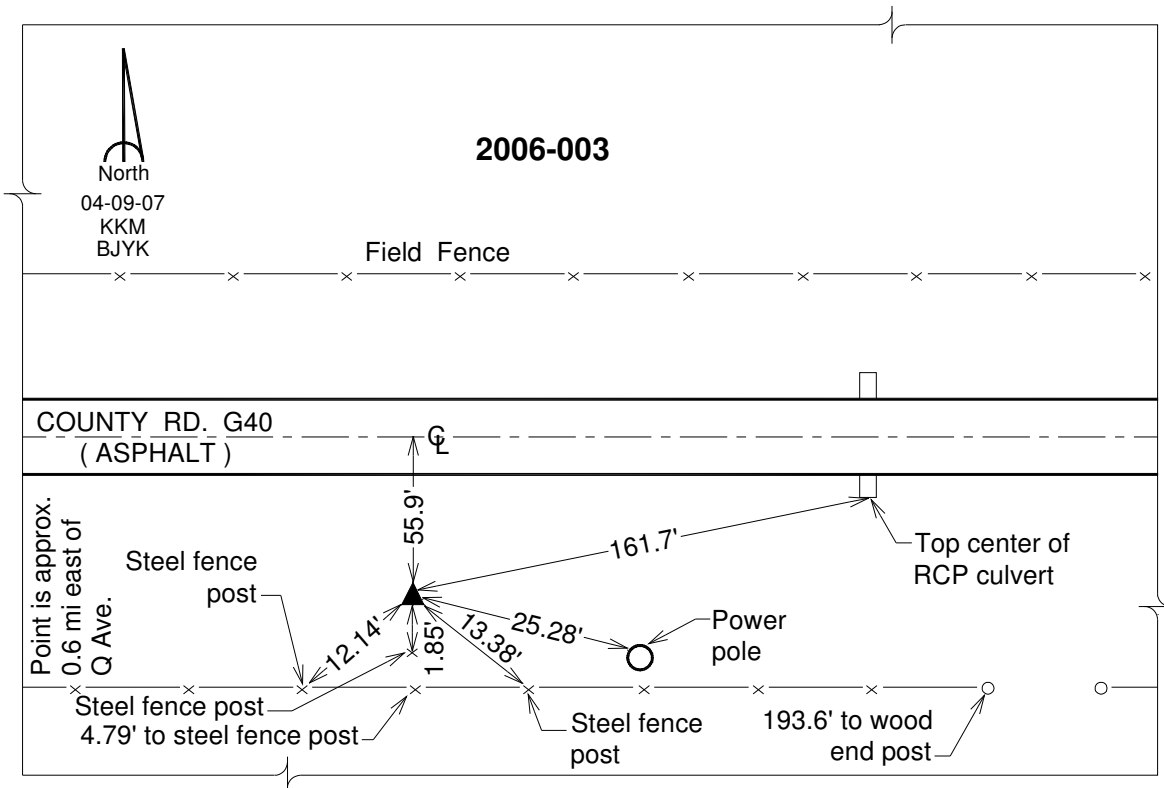
Iowa South Zone (1402) Northing: **491399.782sft** Easting: **2240667.928sft**

Mapping Angle: **1°26'23"** Combination Scale Factor: **0.999923897**

IaRCS Zone 14 Northing: **6592790.897sft** Easting: **24482357.923sft**

Mapping Angle: **-0°02'33"** Combination Scale Factor: **0.9999914249**

**Monument Type:** Berntsen Top Security Rod Monument with a 2-1/2" dia. domed survey cap and permanent magnet encased in a white PVC pipe with a NGS style aluminum access cover.



*This document was prepared by DCI on November 10, 2014 for use by Muscatine County, Iowa*