

Muscatine County, Iowa

Horizontal Datum: **NAD 83(2011)** - Vertical Datum: **NAVD 1988**

Iowa State Plane South Zone (1402)

Iowa Regional Coordinate System Zone 14 Burlington

US Survey Feet

2014

Point Name: **5**

Designation: Louisa Co. GPS Control Pt 2006-005 (Set by DCI in 2006)

NAD 83(NA2011) Latitude: **N41°35'54.13918"** Longitude: **W91°18'20.07611"**

NAVD 88 Ortho Height: **670.739sft** Ellip. Ht: **563.499sft** **Geoid12A**

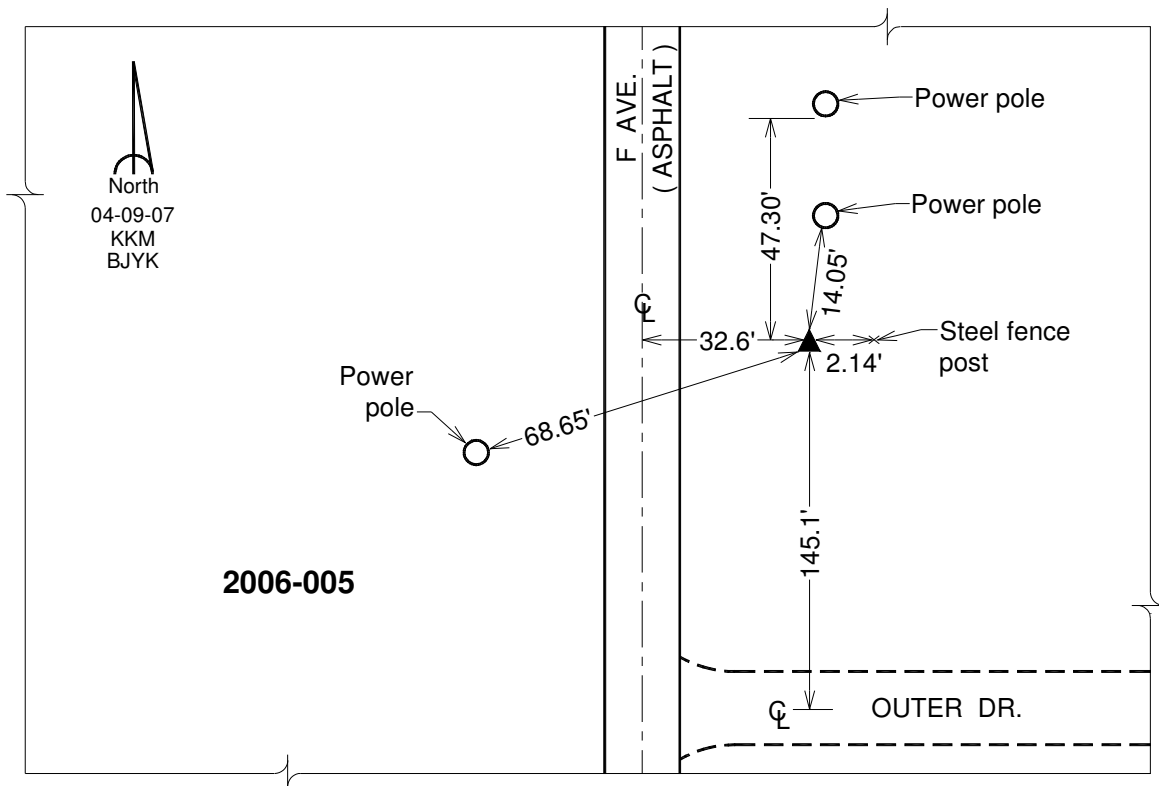
Iowa South Zone (1402) Northing: **589919.051sft** Easting: **2240559.623sft**

Mapping Angle: **1°26'44"** Combination Scale Factor: **0.999945504**

IaRCS Zone 14 Northing: **6691285.768sft** Easting: **24484798.273sft**

Mapping Angle: **-0°02'13"** Combination Scale Factor: **0.9999913754**

Monument Type: Berntsen Top Security Rod Monument with a 2-1/2" dia. domed survey cap and permanent magnet encased in a white PVC pipe with a NGS style aluminum access cover.



This document was prepared by DCI on November 10, 2014 for use by Muscatine County, Iowa