

## Muscatine County, Iowa

Horizontal Datum: **NAD 83(2011)** - Vertical Datum: **NAVD 1988**

Iowa State Plane South Zone (1402)

Iowa Regional Coordinate System Zone 14 Burlington

US Survey Feet

**2014**

Point Name: **20**

**Designation:** Cedar Co. GPS Control Pt 2007-020 (Set by DCI in 2007)

NAD 83(NA2011) Latitude: **N41°35'52.60371"** Longitude: **W91°11'46.66429"**

NAVD 88 Ortho Height: **714.987sft** Ellip. Ht: **607.691sft** **Geoid12A**

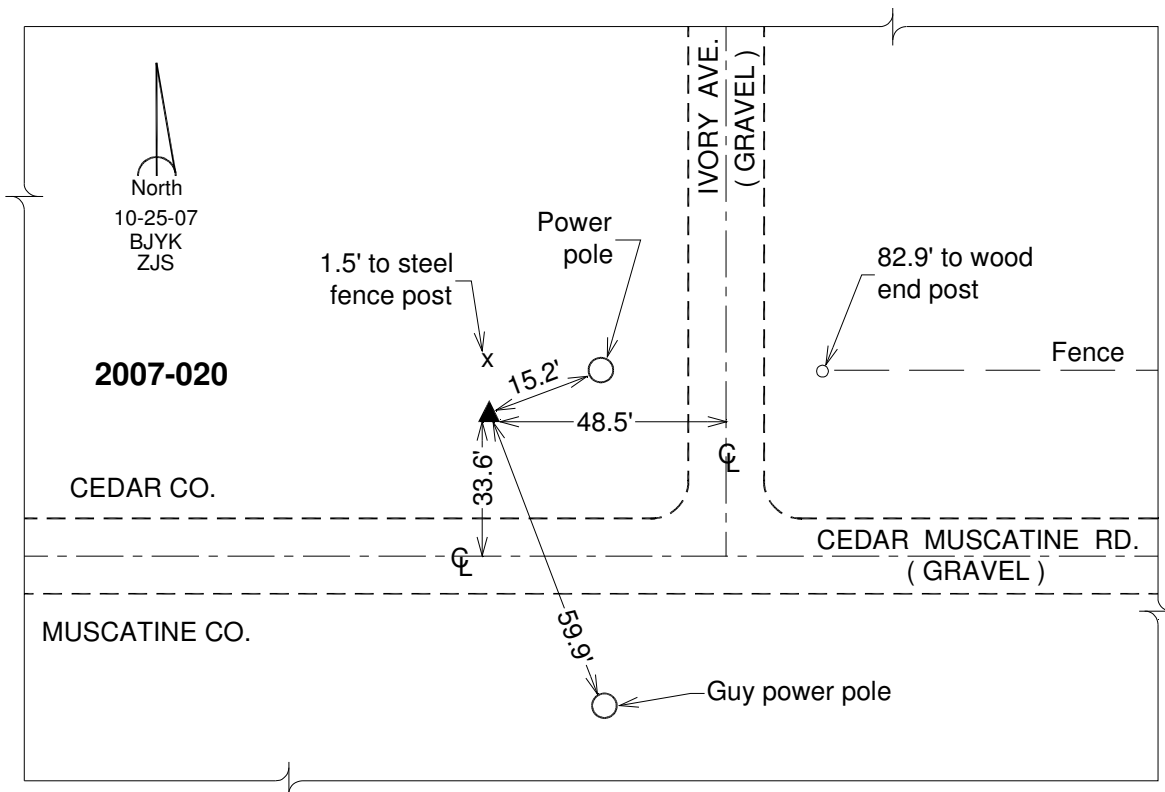
Iowa South Zone (1402) Northing: **590536.451sft** Easting: **2270443.702sft**

Mapping Angle: **1°31'03"** Combination Scale Factor: **0.999943344**

IaRCS Zone 14 Northing: **6691130.023sft** Easting: **24514689.690sft**

Mapping Angle: **0°02'08"** Combination Scale Factor: **0.9999892492**

**Monument Type:** Berntsen 3/4" Top Security Rod Monument with a 2-1/2" dia. domed survey cap and permanent magnet encased in a white PVC pipe with a NGS style alum. access cover.



*This document was prepared by DCI on November 10, 2014 for use by Muscatine County, Iowa*