

Muscatine County, Iowa

Horizontal Datum: **NAD 83(2011)** - Vertical Datum: **NAVD 1988**

Iowa State Plane South Zone (1402)

Iowa Regional Coordinate System Zone 14 Burlington

US Survey Feet

2014

Point Name: **34**

Designation: Cedar Co. GPS Control Pt 2007-034 (Set by DCI in 2007)

NAD 83(NA2011) Latitude: **N41°35'59.29455"** Longitude: **W91°05'53.71159"**

NAVD 88 Ortho Height: **685.272sft** Ellip. Ht: **577.902sft** **Geoid12A**

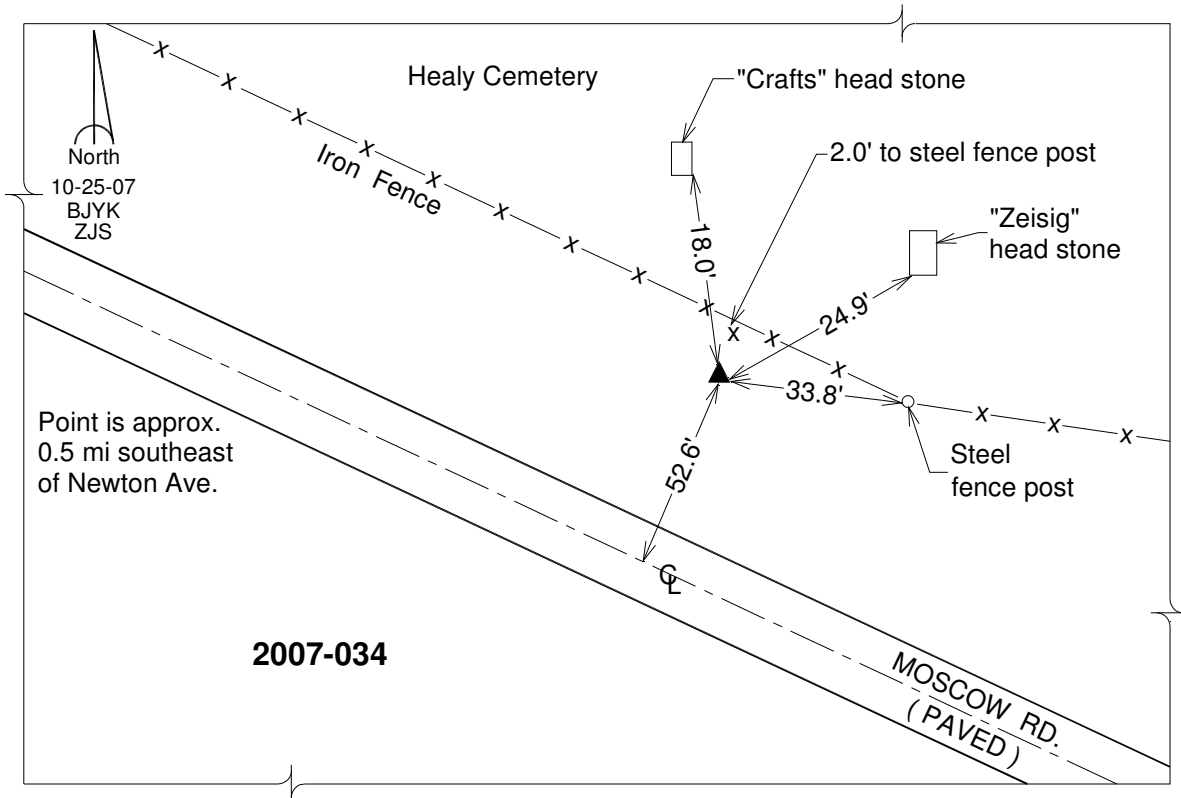
Iowa South Zone (1402) Northing: **591938.651sft** Easting: **2297231.394sft**

Mapping Angle: **1°34'55"** Combination Scale Factor: **0.999944991**

IaRCS Zone 14 Northing: **6691839.194sft** Easting: **24541505.928sft**

Mapping Angle: **0°06'03"** Combination Scale Factor: **0.9999923927**

Monument Type: Berntsen 3/4" Top Security Rod Monument with a 2-1/2" dia. domed survey cap and permanent magnet encased in a white PVC pipe with a NGS style alum. access cover.



This document was prepared by DCI on November 10, 2014 for use by Muscatine County, Iowa