

**Muscatine County, Iowa**

Horizontal Datum: **NAD 83(2011)** - Vertical Datum: **NAVD 1988**  
Iowa State Plane South Zone (1402)  
Iowa Regional Coordinate System Zone 14 Burlington  
US Survey Feet  
**2014**

Point Name: **47**

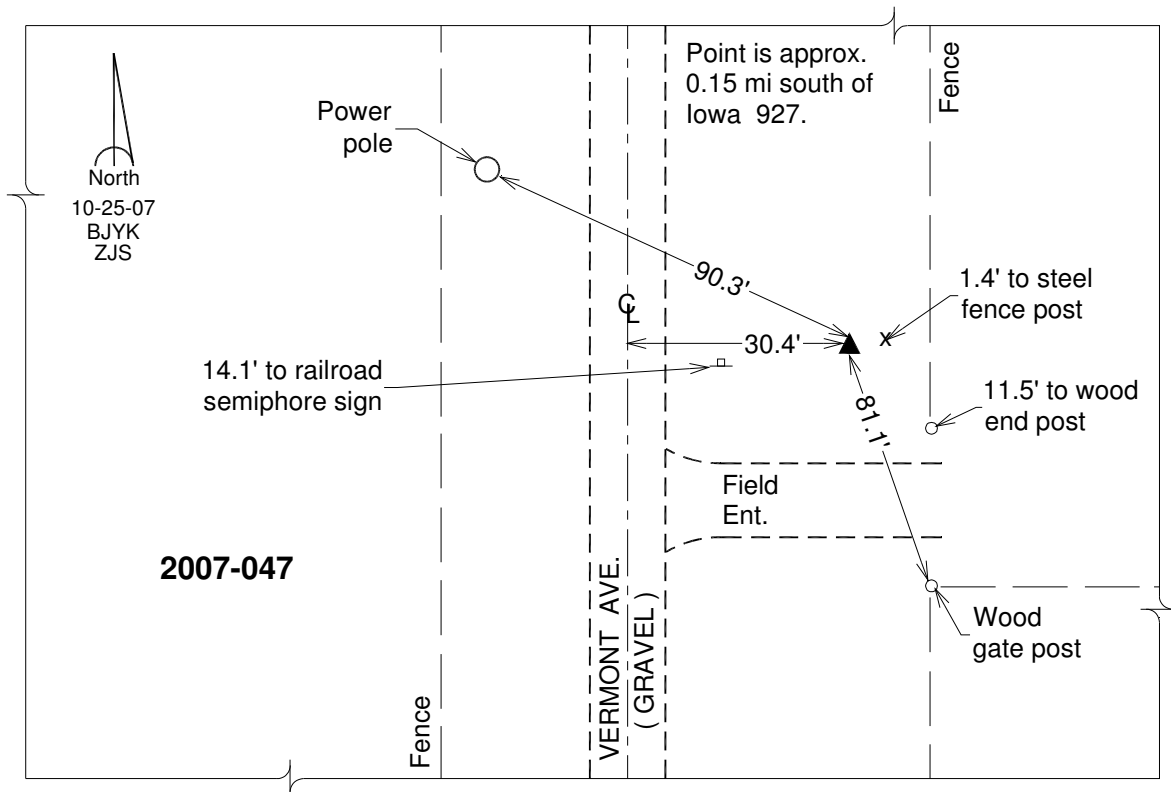
**Designation:** Cedar Co. GPS Control Pt 2007-047 (Set by DCI in 2007)

NAD 83(NA2011) Latitude: **N41°35'50.86814"** Longitude: **W90°57'28.40938"**  
NAVD 88 Ortho Height: **687.539sft** Ellip. Ht: **580.031sft** **Geoid12A**

Iowa South Zone (1402) Northing: **592176.972sft** Easting: **2335630.938sft**  
Mapping Angle: **1°40'28"** Combination Scale Factor: **0.999944606**

IaRCS Zone 14 Northing: **6691084.997sft** Easting: **24579900.722sft**  
Mapping Angle: **0°11'38"** Combination Scale Factor: **0.9999976179**

**Monument Type:** Berntsen 3/4" Top Security Rod Monument with a 2-1/2" dia. domed survey cap and permanent magnet encased in a white PVC pipe with a NGS style alum. access cover.



*This document was prepared by DCI on November 10, 2014 for use by Muscatine County, Iowa*