

Muscatine County, Iowa

Horizontal Datum: **NAD 83(2011)** - Vertical Datum: **NAVD 1988**

Iowa State Plane South Zone (1402)

Iowa Regional Coordinate System Zone 14 Burlington

US Survey Feet

2014

Point Name: **50**

Designation: Johnson Co. GPS Control Pt 92-50 (Set by ASI in 1992)

NAD 83(NA2011) Latitude: **N41°35'53.30384"** Longitude: **W91°21'59.02880"**

NAVD 88 Ortho Height: **736.960sft** Ellip. Ht: **629.734sft** **Geoid12A**

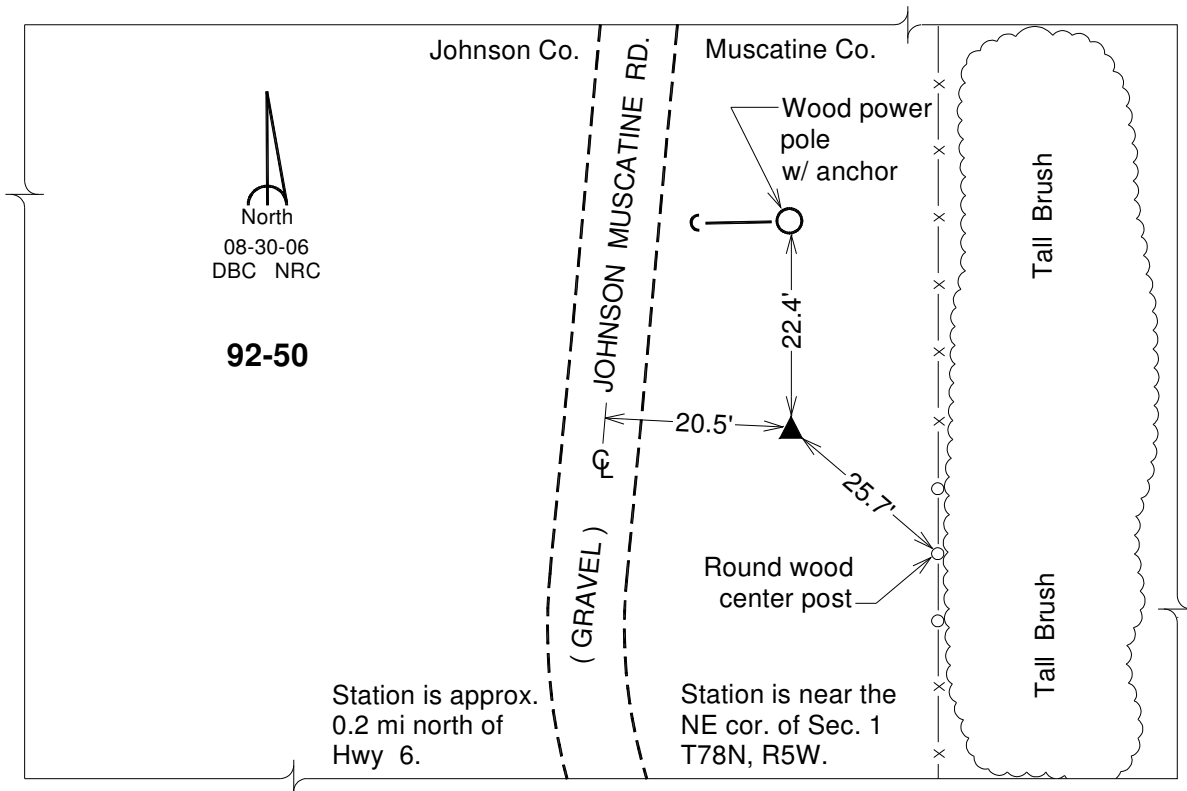
Iowa South Zone (1402) Northing: **589420.709sft** Easting: **2223931.640sft**

Mapping Angle: **1°24'19"** Combination Scale Factor: **0.999942316**

IaRCS Zone 14 Northing: **6691217.790sft** Easting: **24468162.193sft**

Mapping Angle: **-0°04'38"** Combination Scale Factor: **0.9999891092**

Monument Type: 5/8" dia. driven aluminum rod with a 2-1/2" dia. aluminum cap and permanent magnet encased in a 6" dia. PVC pipe with an aluminum access cover.



This document was prepared by DCI on November 10, 2014 for use by Muscatine County, Iowa