

Muscatine County, Iowa

Horizontal Datum: **NAD 83(2011)** - Vertical Datum: **NAVD 1988**

Iowa State Plane South Zone (1402)

Iowa Regional Coordinate System Zone 14 Burlington

US Survey Feet

2014

Point Name: **73**

Designation: Johnson Co. GPS Control Pt 92-73 (Set by ASI in 1992)

NAD 83(NA2011) Latitude: **N41°28'52.83046"** Longitude: **W91°22'02.68716"**

NAVD 88 Ortho Height: **663.400sft** Ellip. Ht: **555.855sft** **Geoid12A**

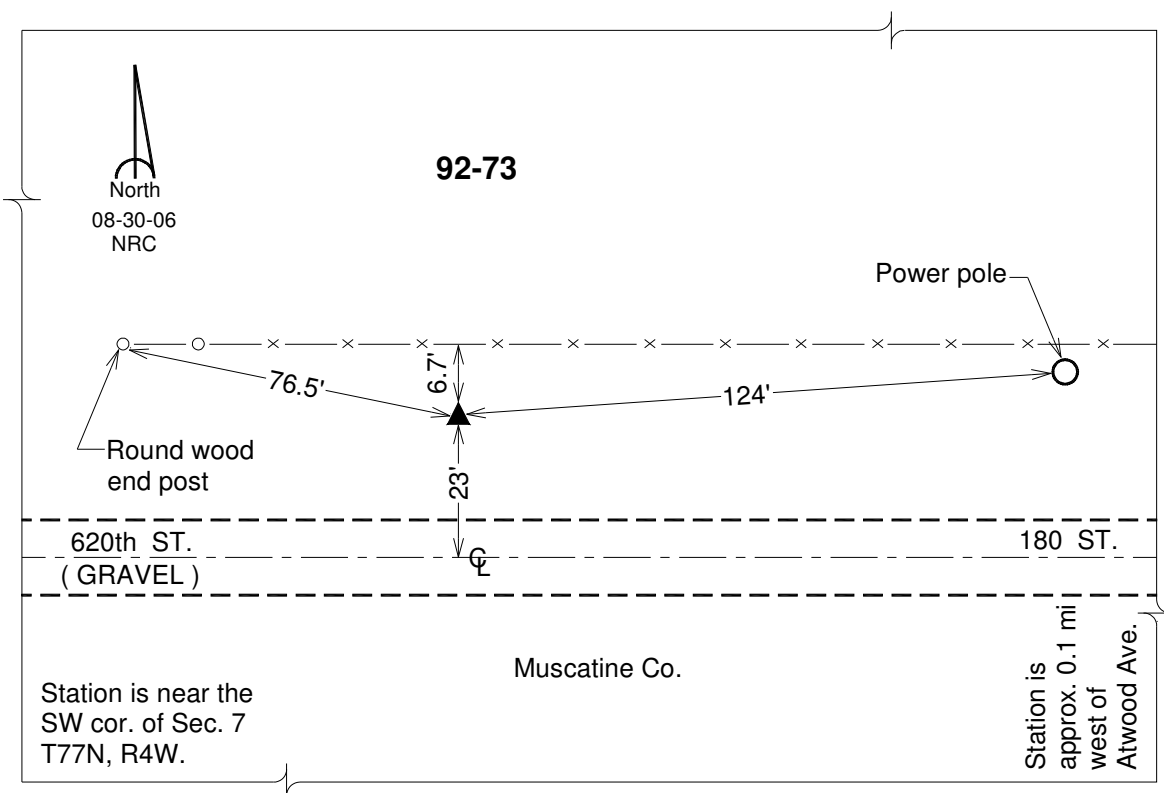
Iowa South Zone (1402) Northing: **546868.792sft** Easting: **2224697.073sft**

Mapping Angle: **1°24'17"** Combination Scale Factor: **0.999933799**

IaRCS Zone 14 Northing: **6648658.051sft** Easting: **24467826.394sft**

Mapping Angle: **-0°04'40"** Combination Scale Factor: **0.9999926588**

Monument Type: 5/8" dia. driven aluminum rod with a 2-1/2" dia. aluminum cap and permanent magnet encased in a 6" dia. PVC pipe with an aluminum access cover.



This document was prepared by DCI on November 10, 2014 for use by Muscatine County, Iowa