

Muscatine County, Iowa

Horizontal Datum: **NAD 83(2011)** - Vertical Datum: **NAVD 1988**
Iowa State Plane South Zone (1402)
Iowa Regional Coordinate System Zone 14 Burlington
US Survey Feet
2014

Point Name: **78**

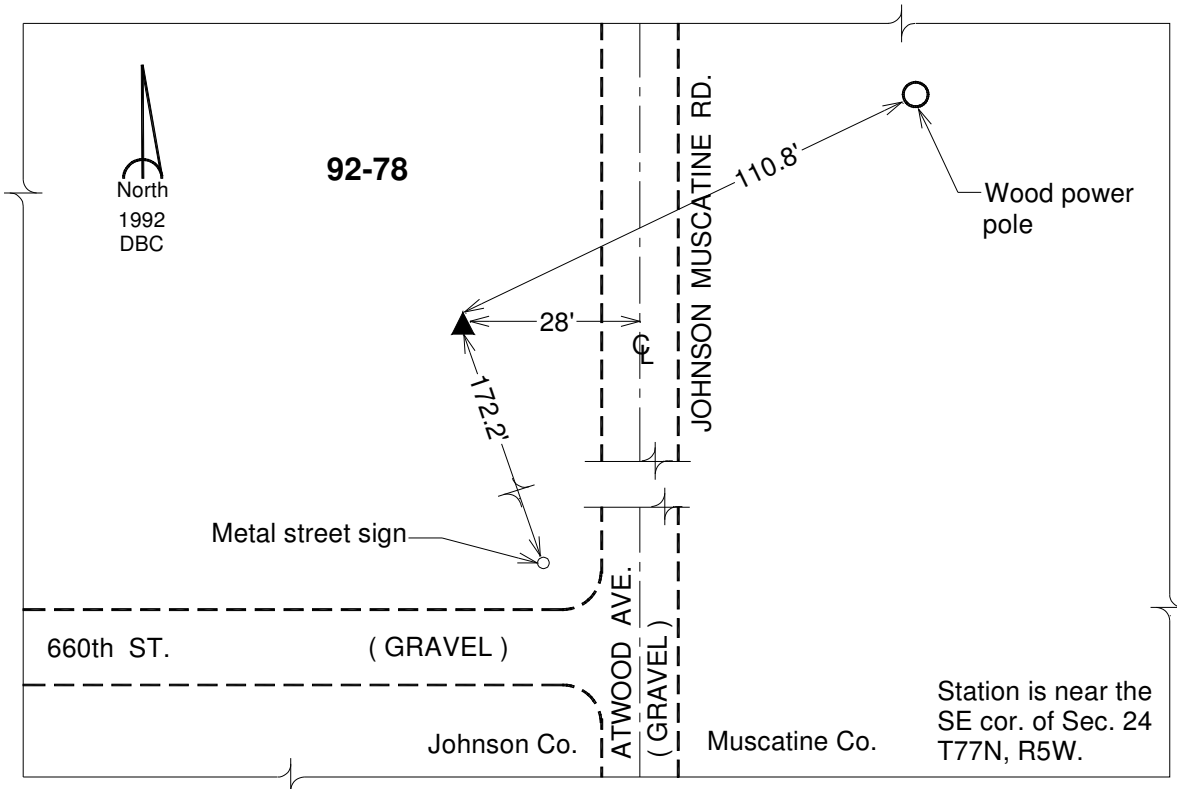
Designation: Johnson Co. GPS Control Pt 92-78 (Set by ASI in 1992)

NAD 83(NA2011) Latitude: **N41°27'09.97713"** Longitude: **W91°22'05.52819"**
NAVD 88 Ortho Height: **709.540sft** Ellip. Ht: **601.896sft** **Geoid12A**

Iowa South Zone (1402) Northing: **536456.600sft** Easting: **2224736.006sft**
Mapping Angle: **1°24'15"** Combination Scale Factor: **0.999929290**

IaRCS Zone 14 Northing: **6638247.711sft** Easting: **24467595.922sft**
Mapping Angle: **-0°04'42"** Combination Scale Factor: **0.9999904789**

Monument Type: 5/8" dia. driven aluminum rod with a 2-1/2" dia. aluminum cap and permanent magnet encased in a 6" dia. PVC pipe with an aluminum access cover.



This document was prepared by DCI on November 10, 2014 for use by Muscatine County, Iowa