

**Muscatine County, Iowa**

Horizontal Datum: **NAD 83(2011)** - Vertical Datum: **NAVD 1988**

Iowa State Plane South Zone (1402)

Iowa Regional Coordinate System Zone 14 Burlington

US Survey Feet

**2014**

Point Name: **79**

**Designation:** Johnson Co. GPS Control Pt 92-79 (Set by ASI in 1992)

NAD 83(NA2011) Latitude: **N41°25'24.08814"** Longitude: **W91°22'06.31362"**

NAVD 88 Ortho Height: **615.480sft** Ellip. Ht: **507.738sft** **Geoid12A**

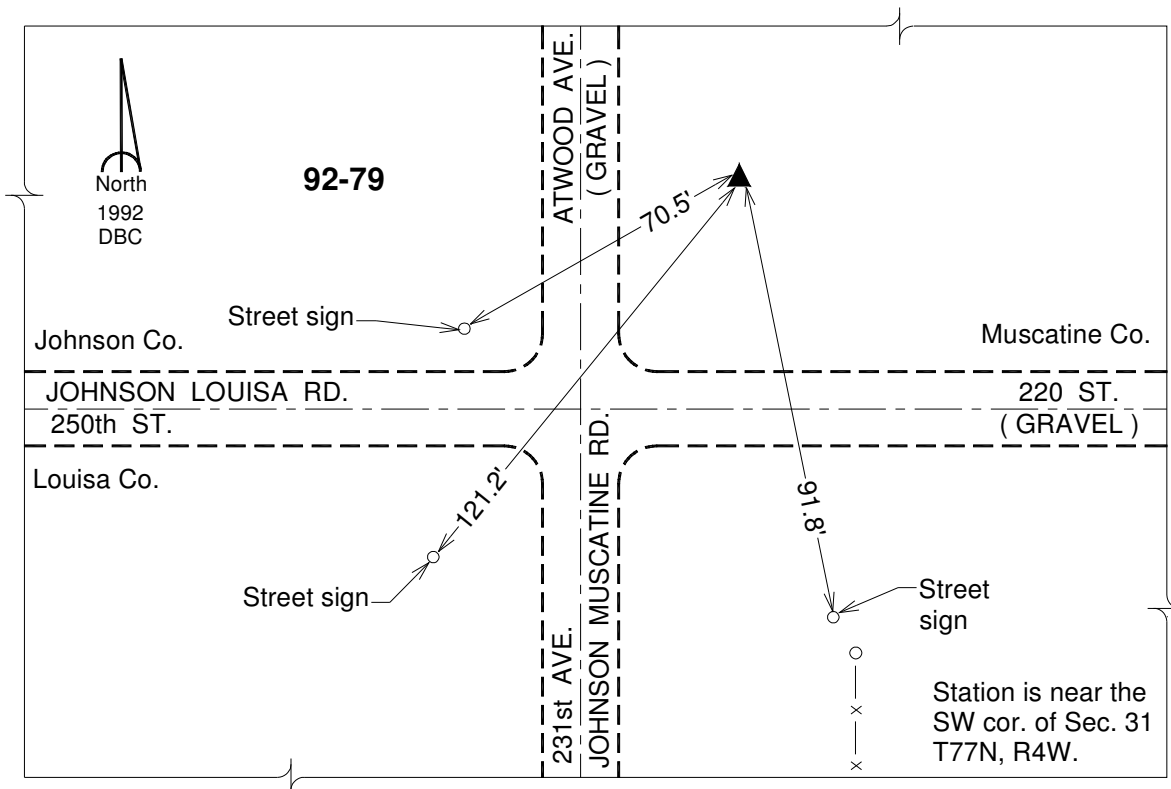
Iowa South Zone (1402) Northing: **525741.167sft** Easting: **2224938.823sft**

Mapping Angle: **1°24'15"** Combination Scale Factor: **0.999931661**

laRCS Zone 14 Northing: **6627529.950sft** Easting: **24467521.451sft**

Mapping Angle: **-0°04'42"** Combination Scale Factor: **0.9999949772**

**Monument Type:** 5/8" dia. driven aluminum rod with a 2-1/2" dia. aluminum cap and permanent magnet encased in a 6" dia. PVC pipe with an aluminum access cover.



*This document was prepared by DCI on November 10, 2014 for use by Muscatine County, Iowa*