

Muscatine County, Iowa

Horizontal Datum: **NAD 83(2011)** - Vertical Datum: **NAVD 1988**

Iowa State Plane South Zone (1402)

Iowa Regional Coordinate System Zone 14 Burlington

US Survey Feet

2014

Point Name: **101**

Designation: Muscatine Co. GPS Control Pt 2000-101 (Set by ASI in 2000)

NAD 83(NA2011) Latitude: **N41°35'48.21787"** Longitude: **W91°08'39.74789"**

NAVD 88 Ortho Height: **736.520sft** Ellip. Ht: **629.189sft** **Geoid12A**

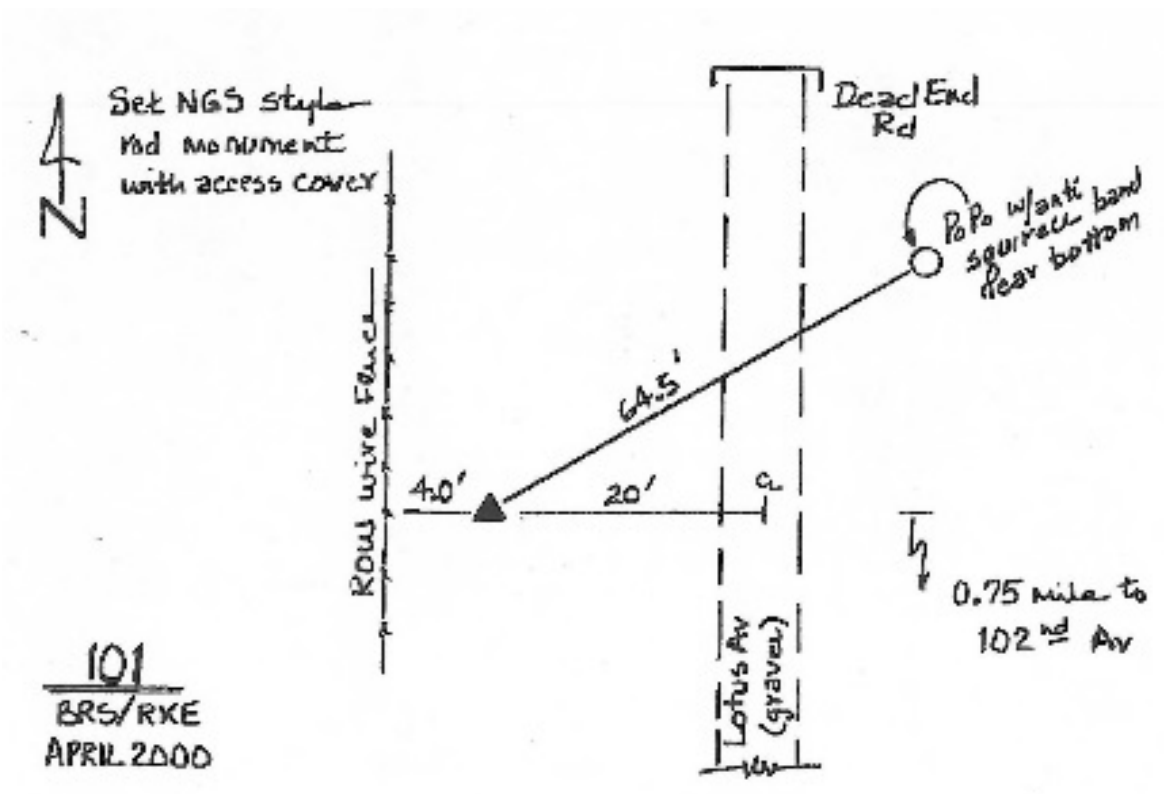
Iowa South Zone (1402) Northing: **590473.005sft** Easting: **2284651.929sft**

Mapping Angle: **1°33'06"** Combination Scale Factor: **0.999942171**

IaRCS Zone 14 Northing: **6690699.196sft** Easting: **24528892.184sft**

Mapping Angle: **0°04'12"** Combination Scale Factor: **0.9999889307**

Monument Type: 5/8" dia. driven aluminum rod with a 2-1/2" dia. aluminum cap and permanent magnet encased in a 5" dia. PVC pipe with an aluminum access cover.



This document was prepared by DCI on November 10, 2014 for use by Muscatine County, Iowa