

Muscatine County, Iowa

Horizontal Datum: **NAD 83(2011)** - Vertical Datum: **NAVD 1988**

Iowa State Plane South Zone (1402)

Iowa Regional Coordinate System Zone 14 Burlington

US Survey Feet

2014

Point Name: **103**

Designation: Muscatine Co. GPS Control Pt 2000-103 (Set by ASI in 2000)

NAD 83(NA2011) Latitude: **N41°35'38.96991"** Longitude: **W90°53'58.71279"**

NAVD 88 Ortho Height: **684.640sft** Ellip. Ht: **577.104sft** **Geoid12A**

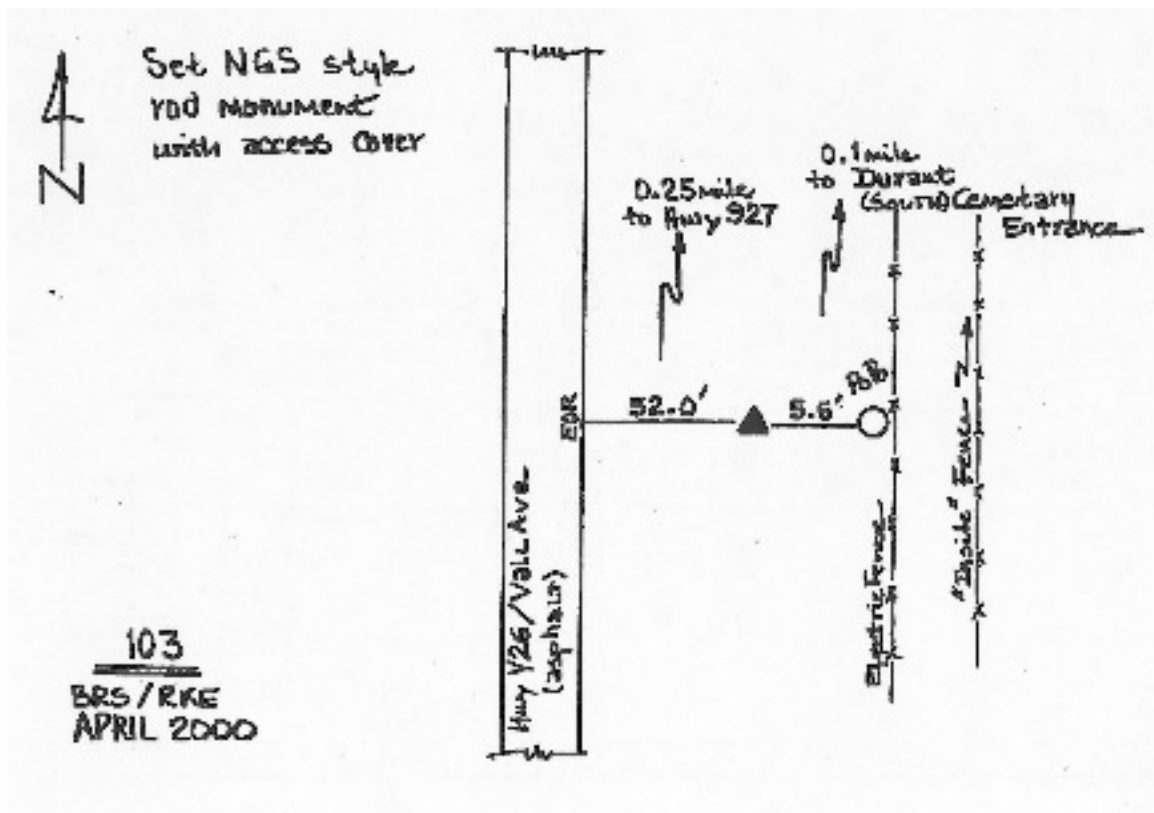
Iowa South Zone (1402) Northing: **591444.111sft** Easting: **2351592.157sft**

Mapping Angle: **1°42'46"** Combination Scale Factor: **0.999944348**

IaRCS Zone 14 Northing: **6689939.956sft** Easting: **24595838.553sft**

Mapping Angle: **0°13'57"** Combination Scale Factor: **1.0000009582**

Monument Type: 5/8" dia. driven aluminum rod with a 2-1/2" dia. aluminum cap and permanent magnet encased in a 5" dia. PVC pipe with an aluminum access cover.



This document was prepared by DCI on November 10, 2014 for use by Muscatine County, Iowa