

Muscatine County, Iowa

Horizontal Datum: **NAD 83(2011)** - Vertical Datum: **NAVD 1988**
Iowa State Plane South Zone (1402)
Iowa Regional Coordinate System Zone 14 Burlington
US Survey Feet
2014

Point Name: **104**

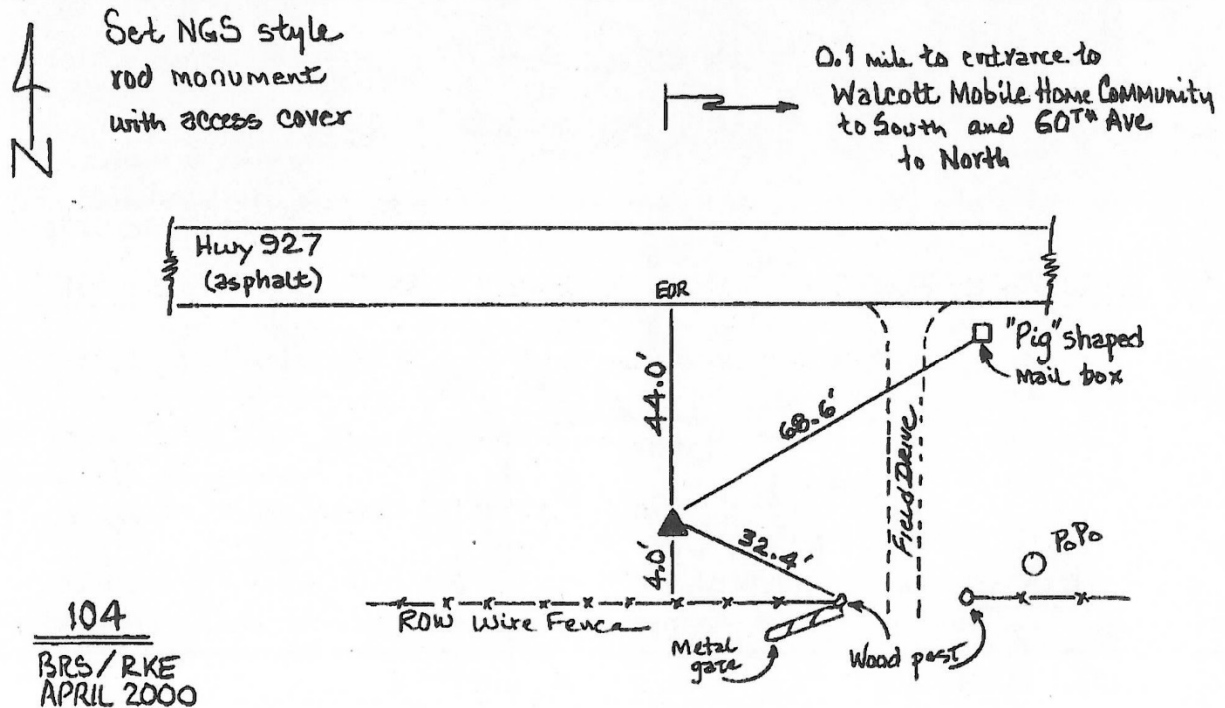
Designation: Muscatine Co. GPS Control Pt 2000-104 (Set by ASI in 2000)

NAD 83(NA2011) Latitude: **N41°35'46.98679"** Longitude: **W90°47'07.12530"**
NAVD 88 Ortho Height: **733.820sft** Ellip. Ht: **626.239sft** **Geoid12A**

Iowa South Zone (1402) Northing: **593210.458sft** Easting: **2382825.134sft**
Mapping Angle: **1°47'17"** Combination Scale Factor: **0.999942271**

IaRCS Zone 14 Northing: **6690899.102sft** Easting: **24627108.616sft**
Mapping Angle: **0°18'31"** Combination Scale Factor: **1.0000065805**

Monument Type: 5/8" dia. driven aluminum rod with a 2-1/2" dia. aluminum cap and permanent magnet encased in a 5" dia. PVC pipe with an aluminum access cover.



This document was prepared by DCI on November 10, 2014 for use by Muscatine County, Iowa