

**Muscatine County, Iowa**

Horizontal Datum: **NAD 83(2011)** - Vertical Datum: **NAVD 1988**  
Iowa State Plane South Zone (1402)  
Iowa Regional Coordinate System Zone 14 Burlington  
US Survey Feet  
**2014**

Point Name: **109**

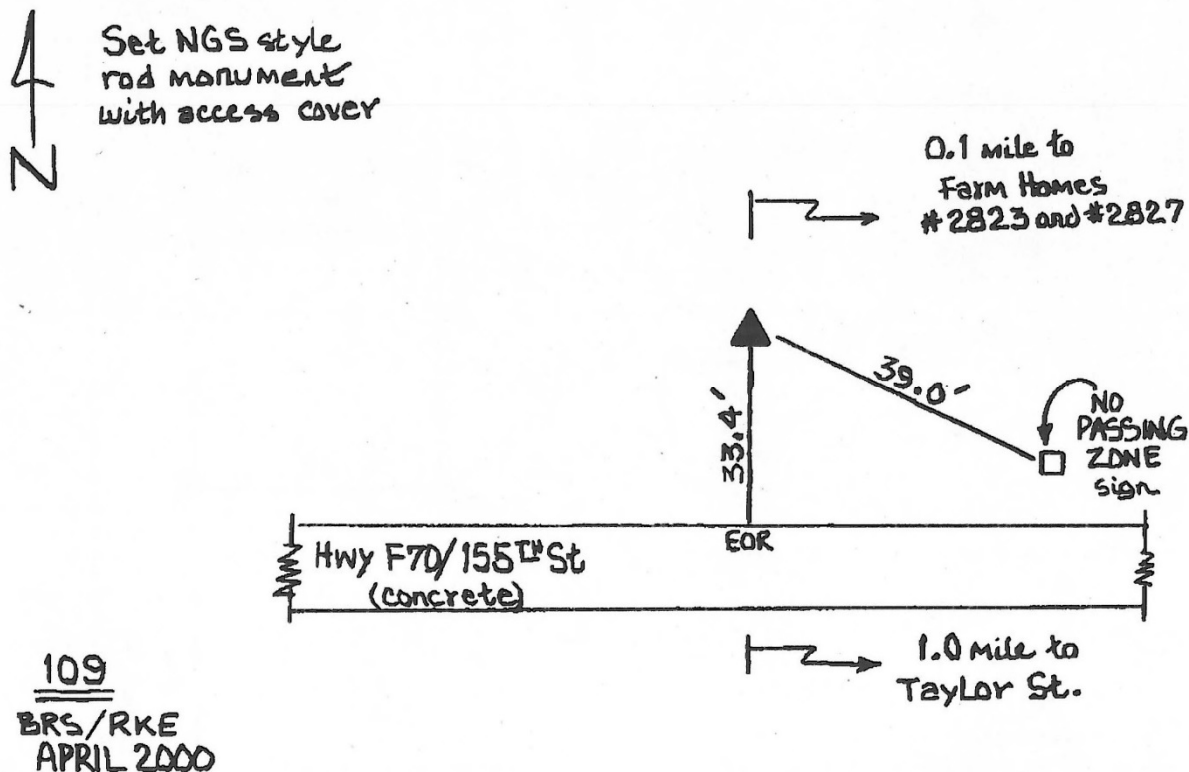
**Designation:** Muscatine Co. GPS Control Pt 2000-109 (Set by ASI in 2000)

NAD 83(NA2011) Latitude: **N41°30'28.67615"** Longitude: **W91°01'03.64978"**  
NAVD 88 Ortho Height: **712.760sft** Ellip. Ht: **605.082sft** **Geoid12A**

Iowa South Zone (1402) Northing: **559107.472sft** Easting: **2320214.884sft**  
Mapping Angle: **1°38'06"** Combination Scale Factor: **0.999933829**

IaRCS Zone 14 Northing: **6658423.090sft** Easting: **24563634.280sft**  
Mapping Angle: **0°09'14"** Combination Scale Factor: **0.9999937544**

**Monument Type:** 5/8" dia. driven aluminum rod with a 2-1/2" dia. aluminum cap and permanent magnet encased in a 5" dia. PVC pipe with an aluminum access cover.



*This document was prepared by DCI on November 10, 2014 for use by Muscatine County, Iowa*