

Muscatine County, Iowa

Horizontal Datum: **NAD 83(2011)** - Vertical Datum: **NAVD 1988**
Iowa State Plane South Zone (1402)
Iowa Regional Coordinate System Zone 14 Burlington
US Survey Feet
2014

Point Name: **111**

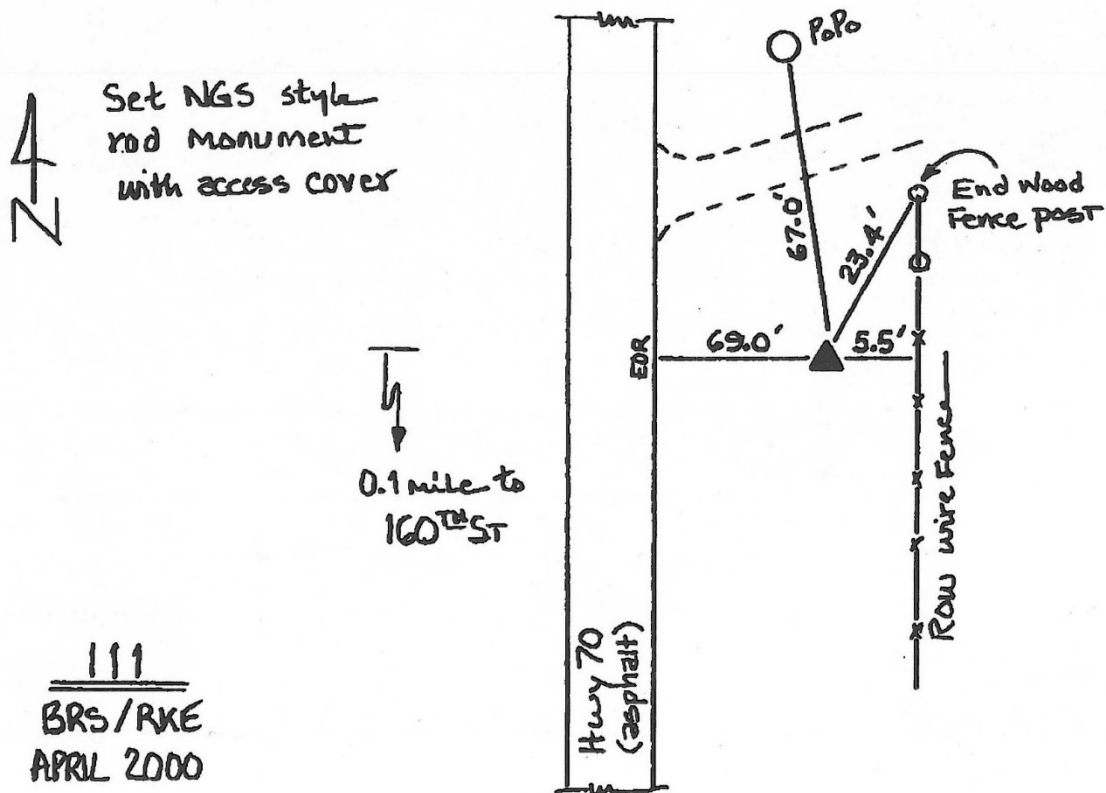
Designation: Muscatine Co. GPS Control Pt 2000-111 (Set by ASI in 2000)

NAD 83(NA2011) Latitude: **N41°30'41.24282"** Longitude: **W91°15'05.35510"**
NAVD 88 Ortho Height: **637.570sft** Ellip. Ht: **530.016sft** **Geoid12A**

Iowa South Zone (1402) Northing: **558637.722sft** Easting: **2256167.543sft**
Mapping Angle: **1°28'52"** Combination Scale Factor: **0.999937739**

IaRCS Zone 14 Northing: **6659609.580sft** Easting: **24499592.576sft**
Mapping Angle: **-0°00'04"** Combination Scale Factor: **0.9999927091**

Monument Type: 5/8" dia. driven aluminum rod with a 2-1/2" dia. aluminum cap and permanent magnet encased in a 5" dia. PVC pipe with an aluminum access cover.



This document was prepared by DCI on November 10, 2014 for use by Muscatine County, Iowa