

Muscatine County, Iowa

Horizontal Datum: **NAD 83(2011)** - Vertical Datum: **NAVD 1988**

Iowa State Plane South Zone (1402)

Iowa Regional Coordinate System Zone 14 Burlington

US Survey Feet

2014

Point Name: **112**

Designation: Muscatine Co. GPS Control Pt 2000-112 (Set by ASI in 2000)

NAD 83(NA2011) Latitude: **N41°28'45.19005"** Longitude: **W91°03'17.49256"**

NAVD 88 Ortho Height: **722.660sft** Ellip. Ht: **614.906sft** **Geoid12A**

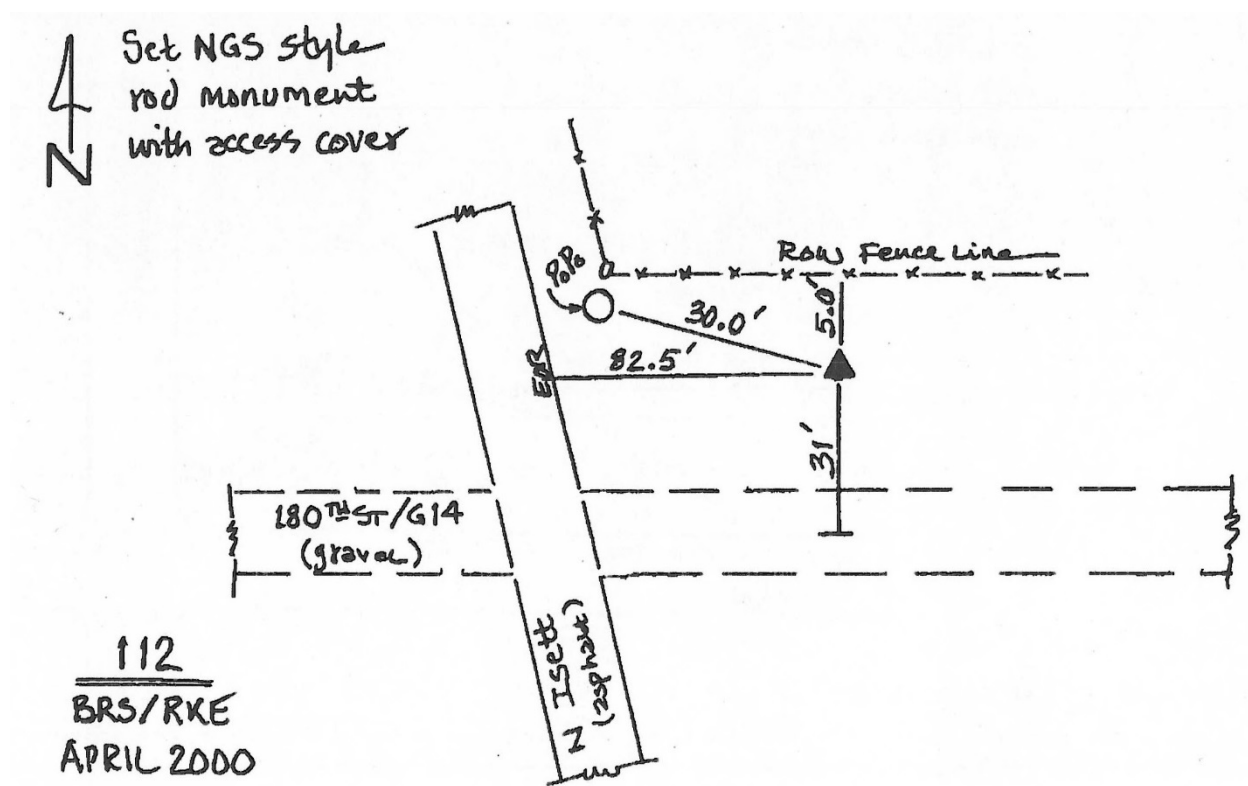
Iowa South Zone (1402) Northing: **548349.089sft** Easting: **2310330.411sft**

Mapping Angle: **1°36'38"** Combination Scale Factor: **0.999930801**

IaRCS Zone 14 Northing: **6647923.179sft** Easting: **24553474.391sft**

Mapping Angle: **0°07'45"** Combination Scale Factor: **0.9999919259**

Monument Type: 5/8" dia. driven aluminum rod with a 2-1/2" dia. aluminum cap and permanent magnet encased in a 5" dia. PVC pipe with an aluminum access cover.



This document was prepared by DCI on November 10, 2014 for use by Muscatine County, Iowa