

**Muscatine County, Iowa**

Horizontal Datum: **NAD 83(2011)** - Vertical Datum: **NAVD 1988**

Iowa State Plane South Zone (1402)

Iowa Regional Coordinate System Zone 14 Burlington

US Survey Feet

**2014**

Point Name: **113**

**Designation:** Muscatine Co. GPS Control Pt 2000-113 (Set by ASI in 2000)

NAD 83(NA2011) Latitude: **N41°28'43.53768"** Longitude: **W90°59'54.89144"**

NAVD 88 Ortho Height: **707.430sft** Ellip. Ht: **599.663sft** **Geoid12A**

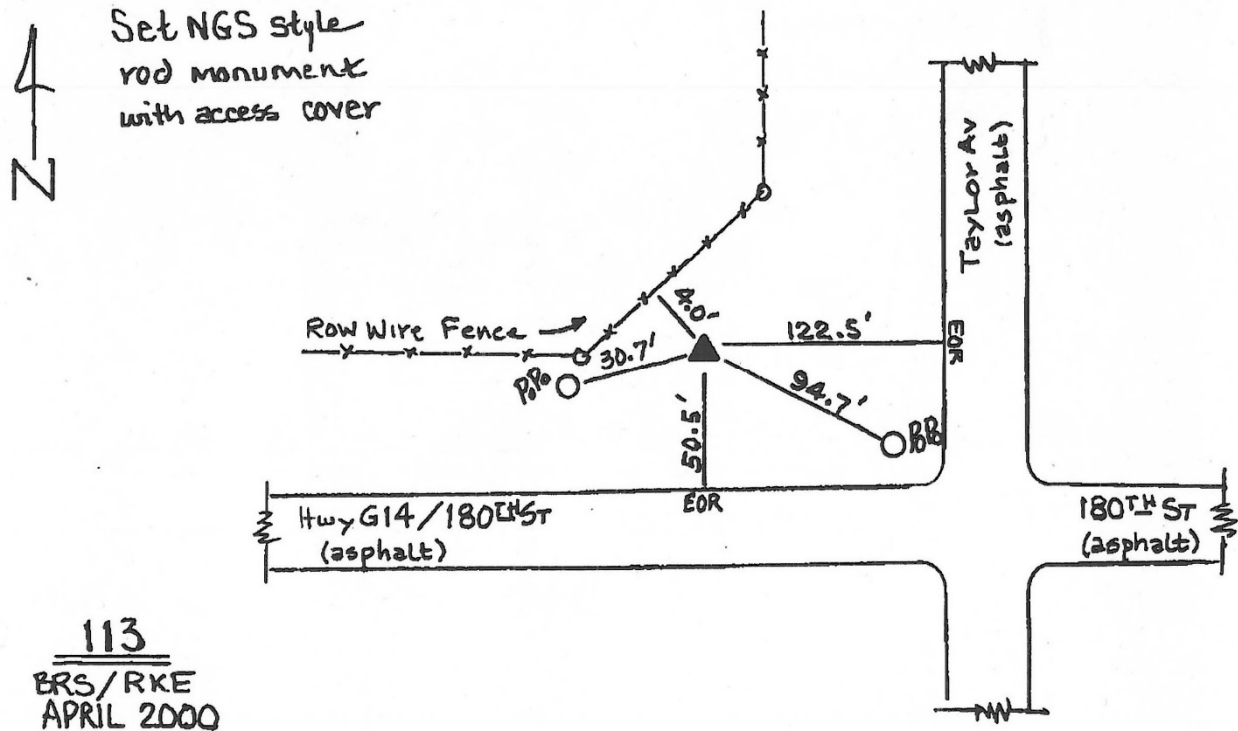
Iowa South Zone (1402) Northing: **548620.340sft** Easting: **2325749.950sft**

Mapping Angle: **1°38'52"** Combination Scale Factor: **0.999931490**

laRCS Zone 14 Northing: **6647795.736sft** Easting: **24568896.748sft**

Mapping Angle: **0°09'59"** Combination Scale Factor: **0.9999948099**

**Monument Type:** 5/8" dia. driven aluminum rod with a 2-1/2" dia. aluminum cap and permanent magnet encased in a 5" dia. PVC pipe with an aluminum access cover.



*This document was prepared by DCI on November 10, 2014 for use by Muscatine County, Iowa*