

Muscatine County, Iowa

Horizontal Datum: **NAD 83(2011)** - Vertical Datum: **NAVD 1988**

Iowa State Plane South Zone (1402)

Iowa Regional Coordinate System Zone 14 Burlington

US Survey Feet

2014

Point Name: **114**

Designation: Muscatine Co. GPS Control Pt 2000-114 (Set by ASI in 2000)

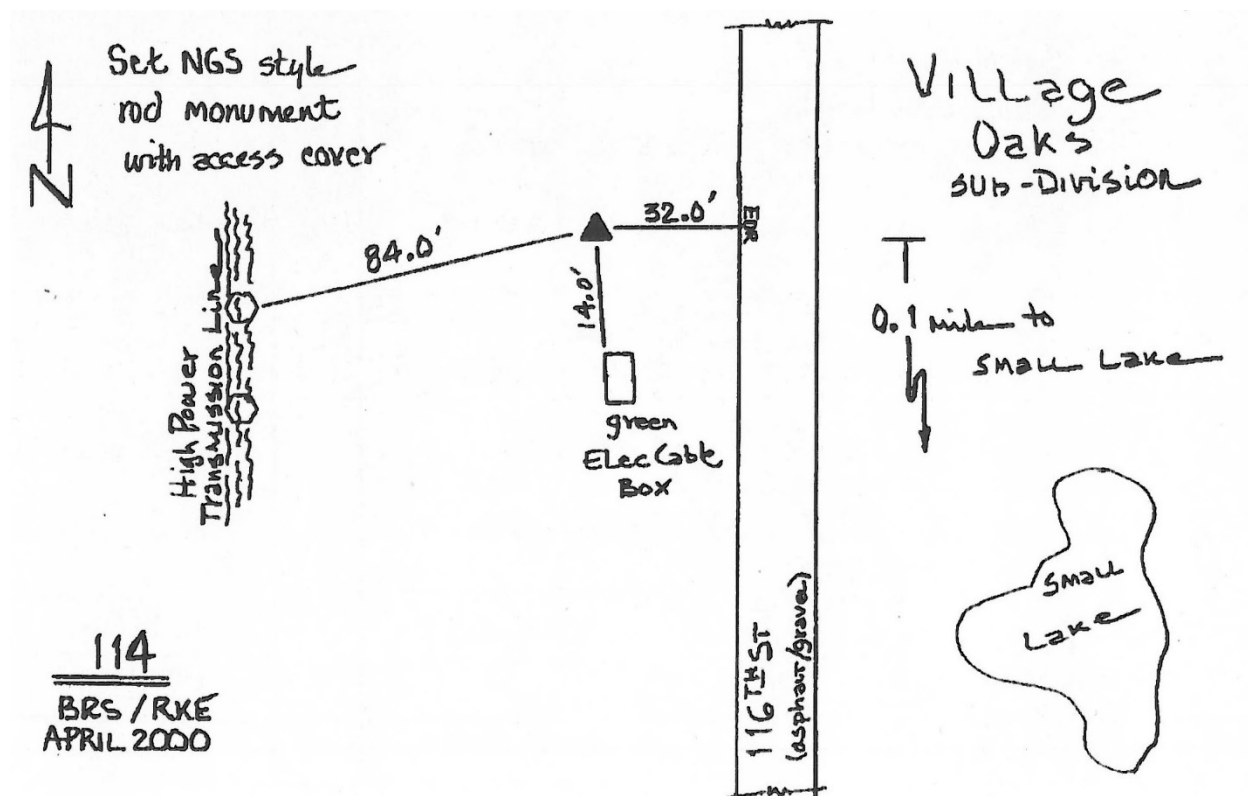
NAD 83(NA2011) Latitude: **N41°28'40.43577"** Longitude: **W90°47'06.45127"**

NAVD 88 Ortho Height: **690.920sft** Ellip. Ht: **583.144sft** **Geoid12A**

Iowa South Zone (1402) Northing: **550060.079sft** Easting: **2384223.599sft**
Mapping Angle: **1°47'18"** Combination Scale Factor: **0.999932205**

IaRCS Zone 14 Northing: **6647723.943sft** Easting: **24627392.127sft**
Mapping Angle: **0°18'28"** Combination Scale Factor: **1.0000087196**

Monument Type: 5/8" dia. driven aluminum rod with a 2-1/2" dia. aluminum cap and permanent magnet encased in a 5" dia. PVC pipe with an aluminum access cover.



This document was prepared by DCI on November 10, 2014 for use by Muscatine County, Iowa