

Muscatine County, Iowa

Horizontal Datum: **NAD 83(2011)** - Vertical Datum: **NAVD 1988**

Iowa State Plane South Zone (1402)

Iowa Regional Coordinate System Zone 14 Burlington

US Survey Feet

2014

Point Name: **115**

Designation: Muscatine Co. GPS Control Pt 2000-115 (Set by ASI in 2000)

NAD 83(NA2011) Latitude: **N41°28'31.61666"** Longitude: **W91°02'18.54150"**

NAVD 88 Ortho Height: **711.666sft** Ellip. Ht: **603.892sft** **Geoid12A**

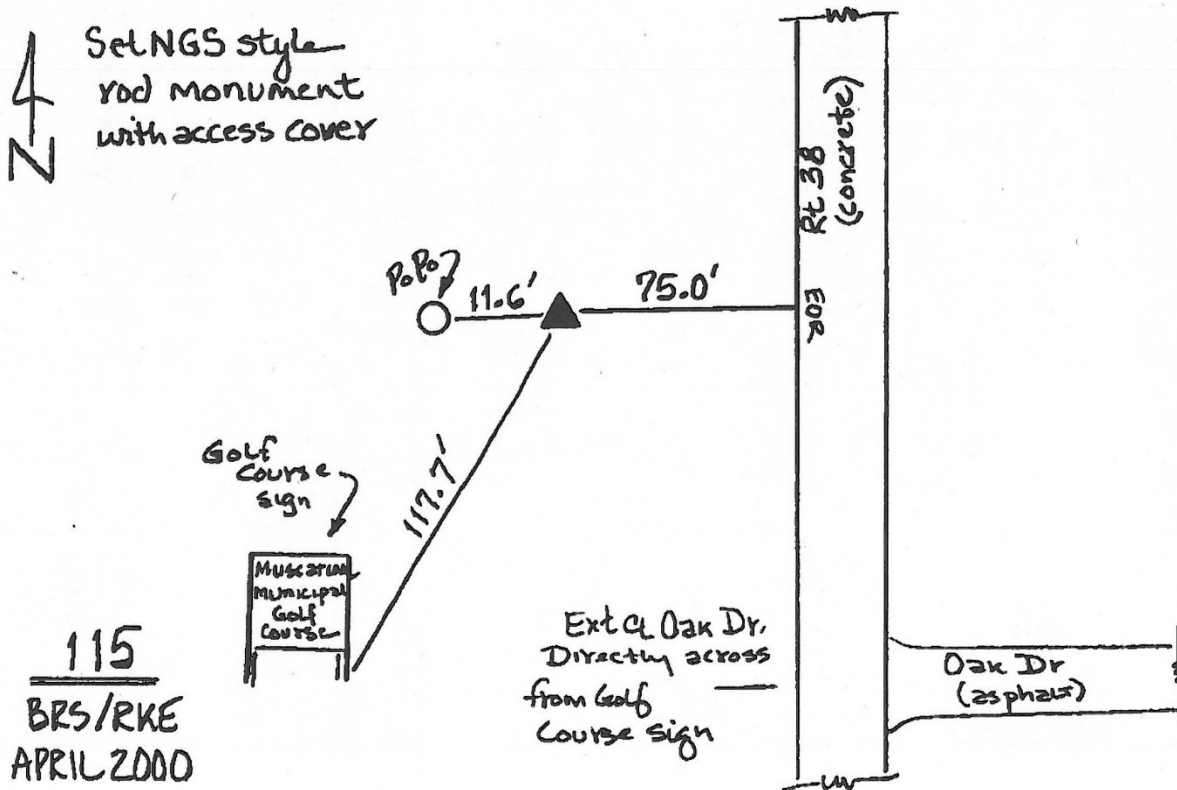
Iowa South Zone (1402) Northing: **547102.382sft** Easting: **2314854.552sft**

Mapping Angle: **1°37'17"** Combination Scale Factor: **0.999931010**

IaRCS Zone 14 Northing: **6646559.850sft** Easting: **24557965.067sft**

Mapping Angle: **0°08'24"** Combination Scale Factor: **0.9999930234**

Monument Type: 5/8" dia. driven aluminum rod with a 2-1/2" dia. aluminum cap and permanent magnet encased in a 5" dia. PVC pipe with an aluminum access cover.



This document was prepared by DCI on November 10, 2014 for use by Muscatine County, Iowa