

Muscatine County, Iowa

Horizontal Datum: **NAD 83(2011)** - Vertical Datum: **NAVD 1988**
Iowa State Plane South Zone (1402)
Iowa Regional Coordinate System Zone 14 Burlington
US Survey Feet
2014

Point Name: **117 (Destroyed)**

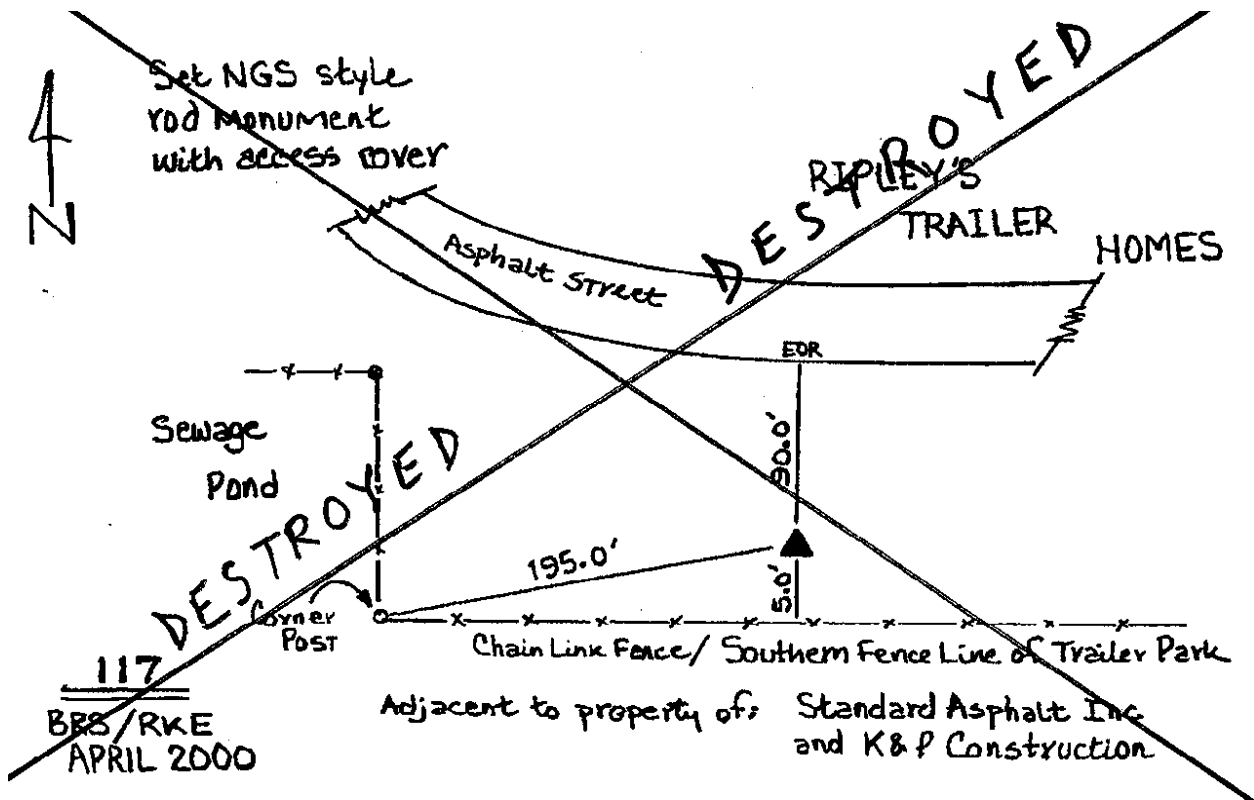
Designation: ~~Muscatine Co. GPS Control Pt 2000-117 (Set by ASI in 2000)~~

NAD 83(NA2011) Latitude: **N41°28'17.066762"** Longitude: **W91°00'23.372344"**
NAVD 88 Ortho Height: **639.85sft** Ellip. Ht: **532.46sft** **Geoid96C**

Iowa South Zone (1402) Northing: **545880.02sft** Easting: **2323659.8sft**
Mapping Angle: **1°38'33"** Combination Scale Factor: **0.99993402**

laRCS Zone 14 Northing: **N/Asft** Easting: **N/Asft**
Mapping Angle: **N/A** Combination Scale Factor: **N/A**

Monument Type: ~~5/8" dia. driven aluminum rod with a 2-1/2" dia. aluminum cap and permanent magnet encased in a 5" dia. PVC pipe with an aluminum access cover.~~



This document was prepared by DCI on November 10, 2014 for use by Muscatine County, Iowa