

Muscatine County, Iowa

Horizontal Datum: **NAD 83(2011)** - Vertical Datum: **NAVD 1988**
Iowa State Plane South Zone (1402)
Iowa Regional Coordinate System Zone 14 Burlington
US Survey Feet
2014

Point Name: **121**

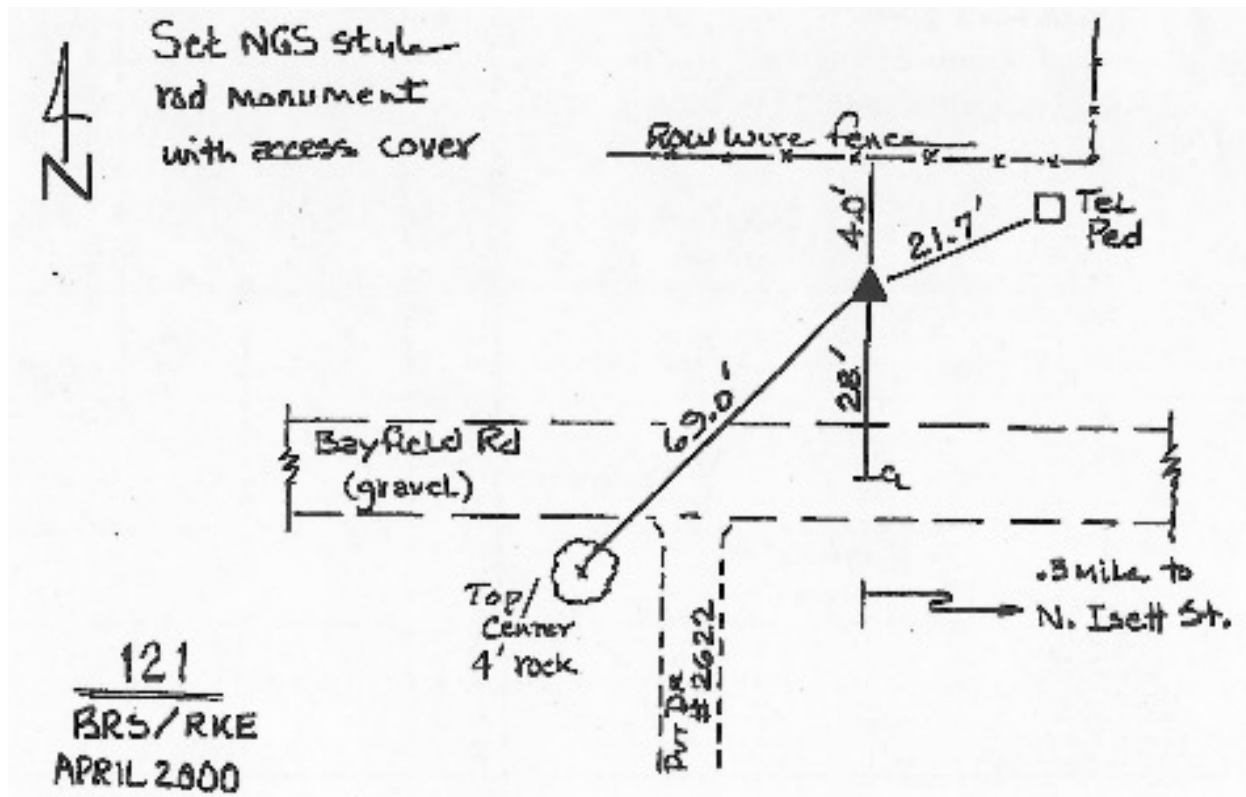
Designation: Muscatine Co. GPS Control Pt 2000-121 (Set by ASI in 2000)

NAD 83(NA2011) Latitude: **N41°27'52.90007"** Longitude: **W91°03'23.86091"**
NAVD 88 Ortho Height: **671.600sft** Ellip. Ht: **563.791sft** **Geoid12A**

Iowa South Zone (1402) Northing: **543045.164sft** Easting: **2309994.521sft**
Mapping Angle: **1°36'34"** Combination Scale Factor: **0.999932043**

IaRCS Zone 14 Northing: **6642629.384sft** Easting: **24553001.466sft**
Mapping Angle: **0°07'41"** Combination Scale Factor: **0.9999943074**

Monument Type: 5/8" dia. driven aluminum rod with a 2-1/2" dia. aluminum cap and permanent magnet encased in a 5" dia. PVC pipe with an aluminum access cover.



This document was prepared by DCI on November 10, 2014 for use by Muscatine County, Iowa