

Muscatine County, Iowa

Horizontal Datum: **NAD 83(2011)** - Vertical Datum: **NAVD 1988**

Iowa State Plane South Zone (1402)

Iowa Regional Coordinate System Zone 14 Burlington

US Survey Feet

2014

Point Name: **122**

Designation: Muscatine Co. GPS Control Pt 2000-122 (Set by ASI in 2000)

NAD 83(NA2011) Latitude: **N41°27'02.05627"** Longitude: **W91°06'21.67971"**

NAVD 88 Ortho Height: **710.860sft** Ellip. Ht: **603.015sft** **Geoid12A**

Iowa South Zone (1402) Northing: **537524.726sft** Easting: **2296603.701sft**

Mapping Angle: **1°34'37"** Combination Scale Factor: **0.999929069**

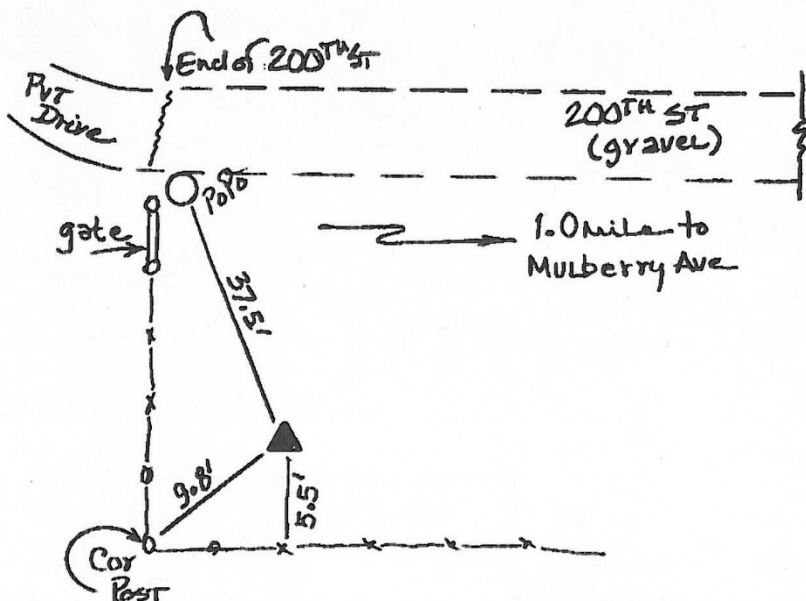
IaRCS Zone 14 Northing: **6637456.681sft** Easting: **24539471.556sft**

Mapping Angle: **0°05'43"** Combination Scale Factor: **0.9999910059**

Monument Type: 5/8" dia. driven aluminum rod with a 2-1/2" dia. aluminum cap and permanent magnet encased in a 5" dia. PVC pipe with an aluminum access cover.



Set NGS style
rod monument
with access cover



122
BRS/RKE
APRIL 2000