

**Muscatine County, Iowa**

Horizontal Datum: **NAD 83(2011)** - Vertical Datum: **NAVD 1988**  
Iowa State Plane South Zone (1402)  
Iowa Regional Coordinate System Zone 14 Burlington  
US Survey Feet  
**2014**

Point Name: **126**

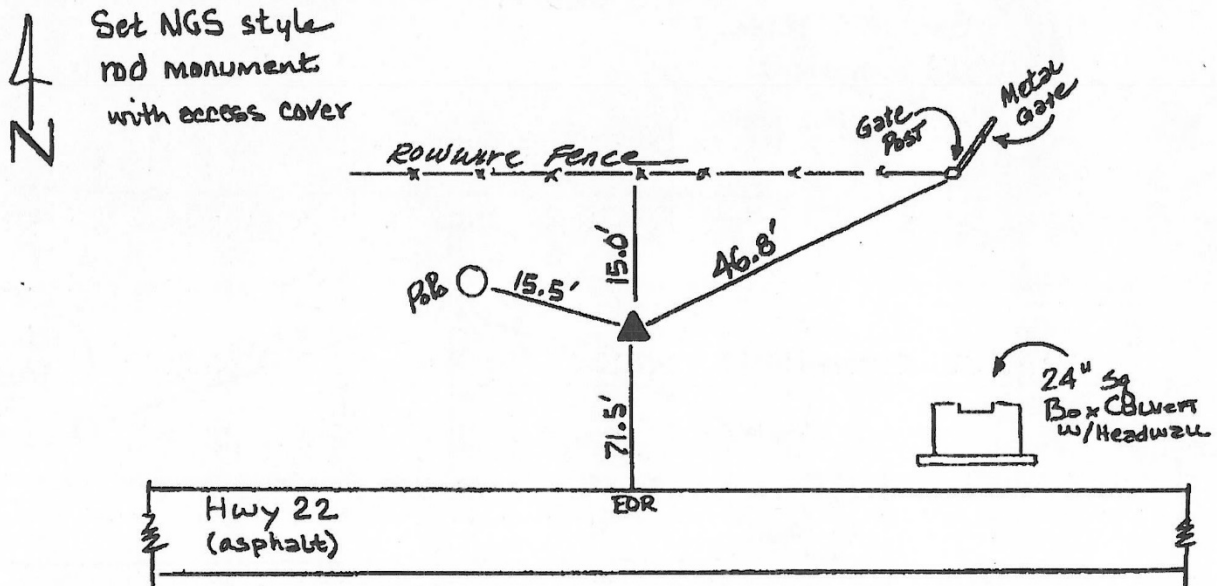
**Designation:** Muscatine Co. GPS Control Pt 2000-126 (Set by ASI in 2000)

NAD 83(NA2011) Latitude: **N41°27'33.41399"** Longitude: **W90°50'39.68276"**  
NAVD 88 Ortho Height: **557.140sft** Ellip. Ht: **449.305sft** **Geoid12A**

Iowa South Zone (1402) Northing: **542778.841sft** Easting: **2368207.981sft**  
Mapping Angle: **1°44'57"** Combination Scale Factor: **0.999937075**

IaRCS Zone 14 Northing: **6640858.425sft** Easting: **24611192.511sft**  
Mapping Angle: **0°16'07"** Combination Scale Factor: **1.0000106893**

**Monument Type:** 5/8" dia. driven aluminum rod with a 2-1/2" dia. aluminum cap and permanent magnet encased in a 5" dia. PVC pipe with an aluminum access cover.



126  
BRS/RKE  
APRIL 2000