

**Muscatine County, Iowa**

Horizontal Datum: **NAD 83(2011)** - Vertical Datum: **NAVD 1988**

Iowa State Plane South Zone (1402)

Iowa Regional Coordinate System Zone 14 Burlington

US Survey Feet

**2014**

Point Name: **127**

**Designation:** Muscatine Co. GPS Control Pt 2000-127 (Set by ASI in 2000)

NAD 83(NA2011) Latitude: **N41°27'31.13990"** Longitude: **W90°47'11.53966"**

NAVD 88 Ortho Height: **555.780sft** Ellip. Ht: **447.943sft** **Geoid12A**

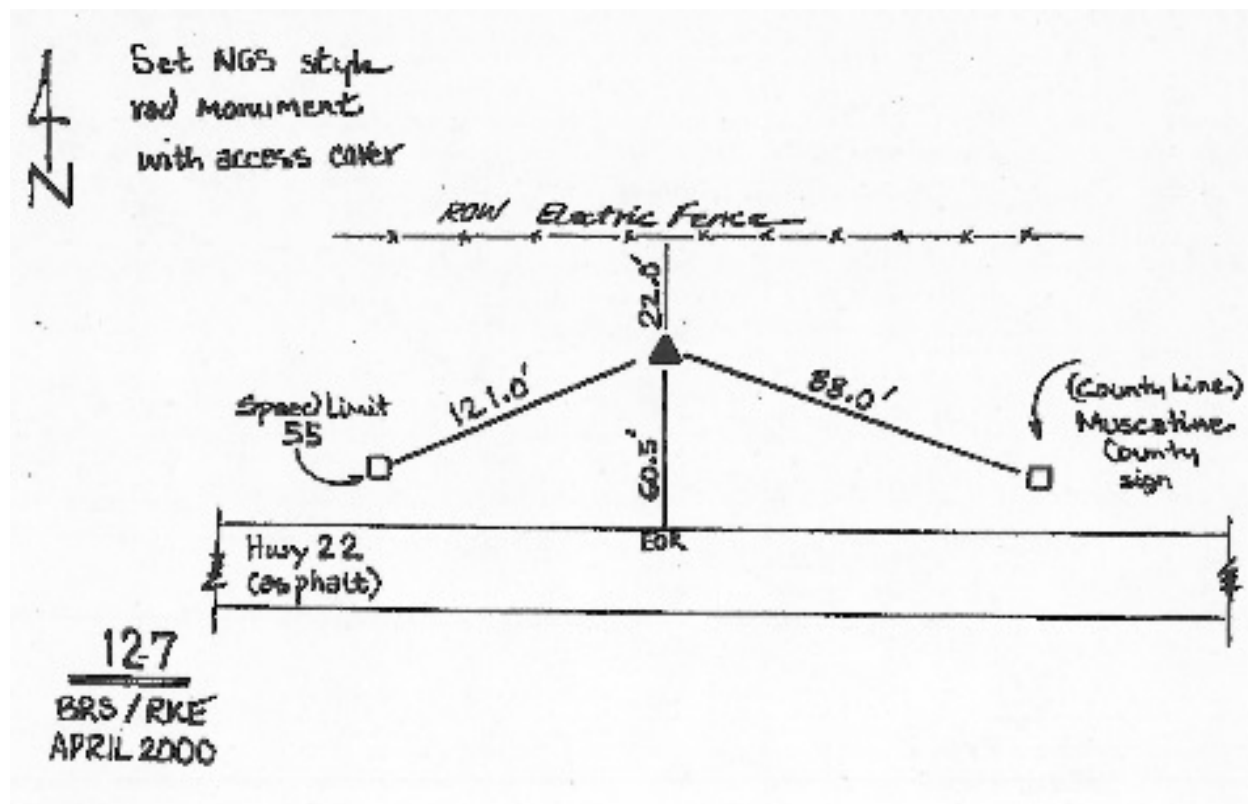
Iowa South Zone (1402) Northing: **543037.814sft** Easting: **2384055.233sft**

Mapping Angle: **1°47'14"** Combination Scale Factor: **0.999937091**

IaRCS Zone 14 Northing: **6640707.830sft** Easting: **24627042.364sft**

Mapping Angle: **0°18'25"** Combination Scale Factor: **1.0000150695**

**Monument Type:** 5/8" dia. driven aluminum rod with a 2-1/2" dia. aluminum cap and permanent magnet encased in a 5" dia. PVC pipe with an aluminum access cover.



*This document was prepared by DCI on November 10, 2014 for use by Muscatine County, Iowa*