

Muscatine County, Iowa

Horizontal Datum: **NAD 83(2011)** - Vertical Datum: **NAVD 1988**

Iowa State Plane South Zone (1402)

Iowa Regional Coordinate System Zone 14 Burlington

US Survey Feet

2014

Point Name: **128**

Designation: Muscatine Co. GPS Control Pt 2000-128 (Set by ASI in 2000)

NAD 83(NA2011) Latitude: **N41°26'08.27850"** Longitude: **W91°07'42.91725"**

NAVD 88 Ortho Height: **723.900sft** Ellip. Ht: **616.013sft** **Geoid12A**

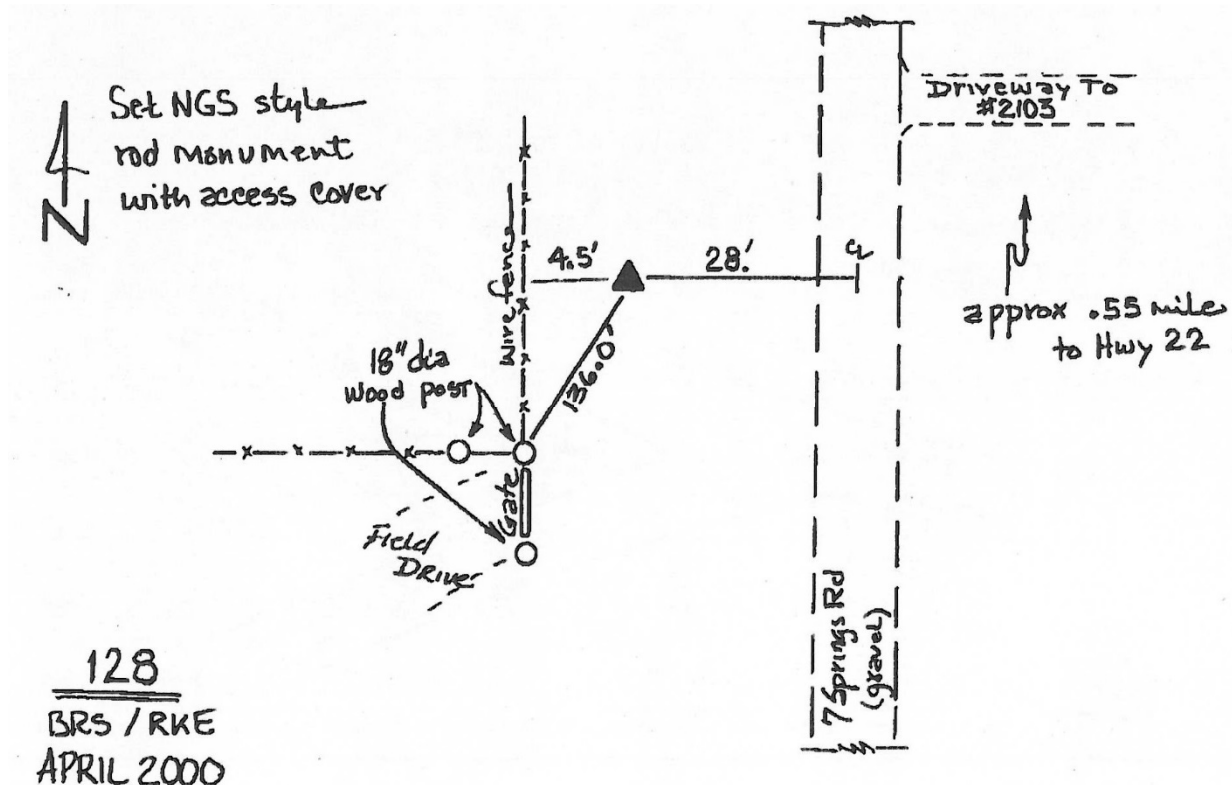
Iowa South Zone (1402) Northing: **531914.379sft** Easting: **2290568.299sft**

Mapping Angle: **1°33'43"** Combination Scale Factor: **0.999927348**

IaRCS Zone 14 Northing: **6632003.928sft** Easting: **24533292.720sft**

Mapping Angle: **0°04'49"** Combination Scale Factor: **0.9999898719**

Monument Type: 5/8" dia. driven aluminum rod with a 2-1/2" dia. aluminum cap and permanent magnet encased in a 5" dia. PVC pipe with an aluminum access cover.



This document was prepared by DCI on November 10, 2014 for use by Muscatine County, Iowa