

Muscatine County, Iowa

Horizontal Datum: **NAD 83(2011)** - Vertical Datum: **NAVD 1988**

Iowa State Plane South Zone (1402)

Iowa Regional Coordinate System Zone 14 Burlington

US Survey Feet

2014

Point Name: **138**

Designation: Muscatine Co. GPS Control Pt 2000-138 (Set by ASI in 2000)

NAD 83(NA2011) Latitude: **N41°22'38.96213"** Longitude: **W91°04'33.73626"**

NAVD 88 Ortho Height: **545.500sft** Ellip. Ht: **437.404sft** **Geoid12A**

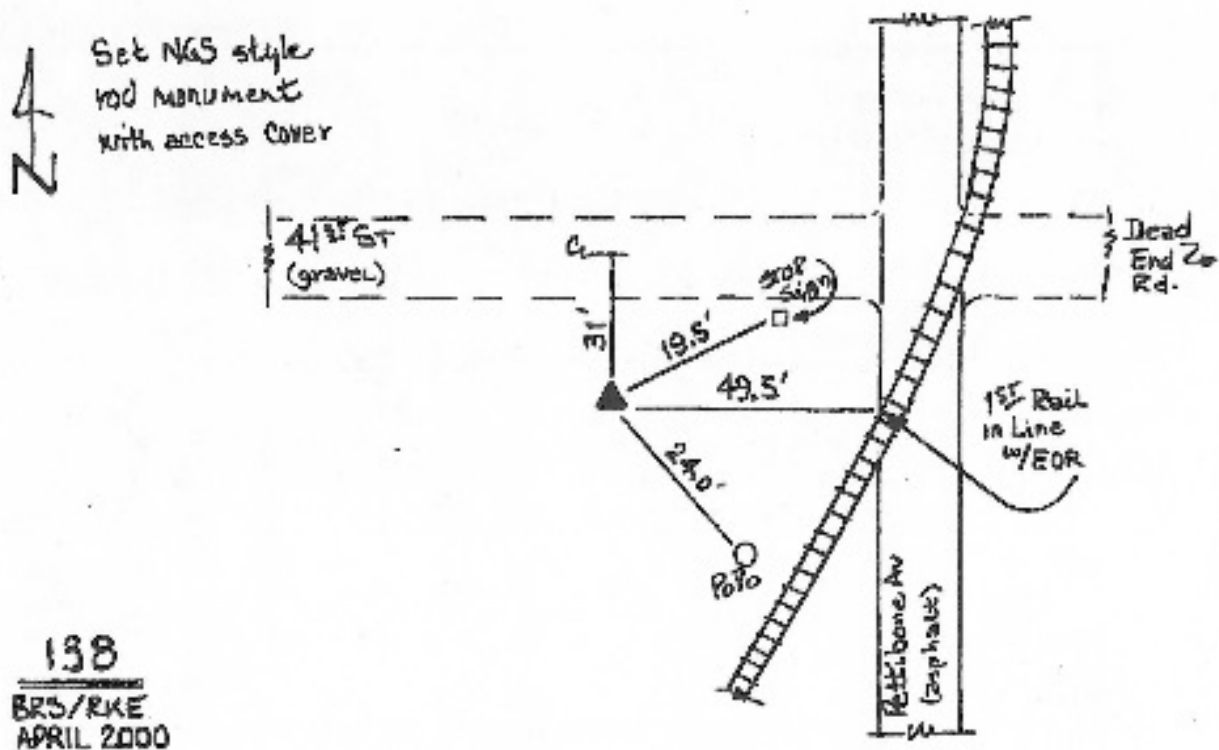
Iowa South Zone (1402) Northing: **511134.673sft** Easting: **2305562.201sft**

Mapping Angle: **1°35'48"** Combination Scale Factor: **0.999932236**

IaRCS Zone 14 Northing: **6610842.090sft** Easting: **24547745.241sft**

Mapping Angle: **0°06'54"** Combination Scale Factor: **0.9999997330**

Monument Type: 5/8" dia. driven aluminum rod with a 2-1/2" dia. aluminum cap and permanent magnet encased in a 5" dia. PVC pipe with an aluminum access cover.



This document was prepared by DCI on November 10, 2014 for use by Muscatine County, Iowa