

Muscatine County, Iowa

Horizontal Datum: **NAD 83(2011)** - Vertical Datum: **NAVD 1988**
Iowa State Plane South Zone (1402)
Iowa Regional Coordinate System Zone 14 Burlington
US Survey Feet
2014

Point Name: **140**

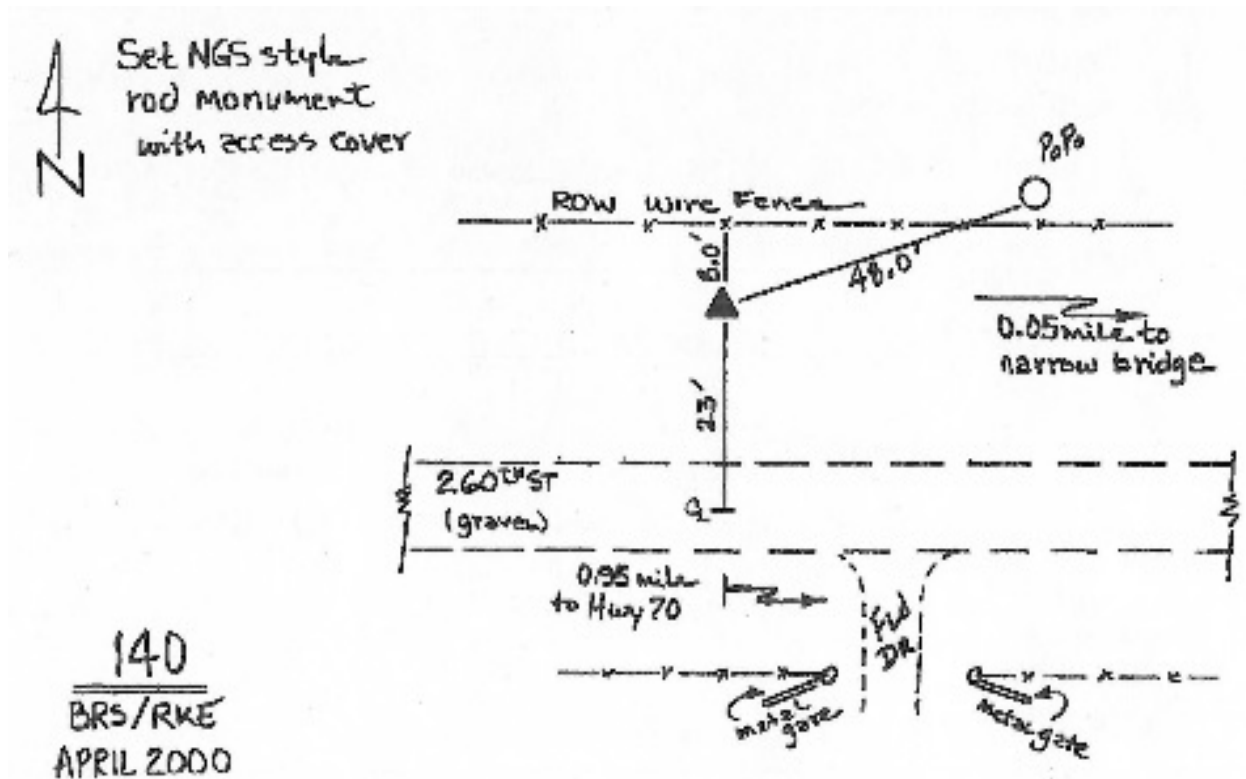
Designation: Muscatine Co. GPS Control Pt 2000-140 (Set by ASI in 2000)

NAD 83(NA2011) Latitude: **N41°21'54.50515"** Longitude: **W91°22'09.59697"**
NAVD 88 Ortho Height: **597.960sft** Ellip. Ht: **490.071sft** **Geoid12A**

Iowa South Zone (1402) Northing: **504529.411sft** Easting: **2225208.313sft**
Mapping Angle: **1°24'13"** Combination Scale Factor: **0.999929083**

IaRCS Zone 14 Northing: **6606316.940sft** Easting: **24467242.095sft**
Mapping Angle: **-0°04'44"** Combination Scale Factor: **0.9999958410**

Monument Type: 5/8" dia. driven aluminum rod with a 2-1/2" dia. aluminum cap and permanent magnet encased in a 5" dia. PVC pipe with an aluminum access cover.



This document was prepared by DCI on November 10, 2014 for use by Muscatine County, Iowa