

Muscatine County, Iowa

Horizontal Datum: **NAD 83(2011)** - Vertical Datum: **NAVD 1988**
Iowa State Plane South Zone (1402)
Iowa Regional Coordinate System Zone 14 Burlington
US Survey Feet
2014

Point Name: **141**

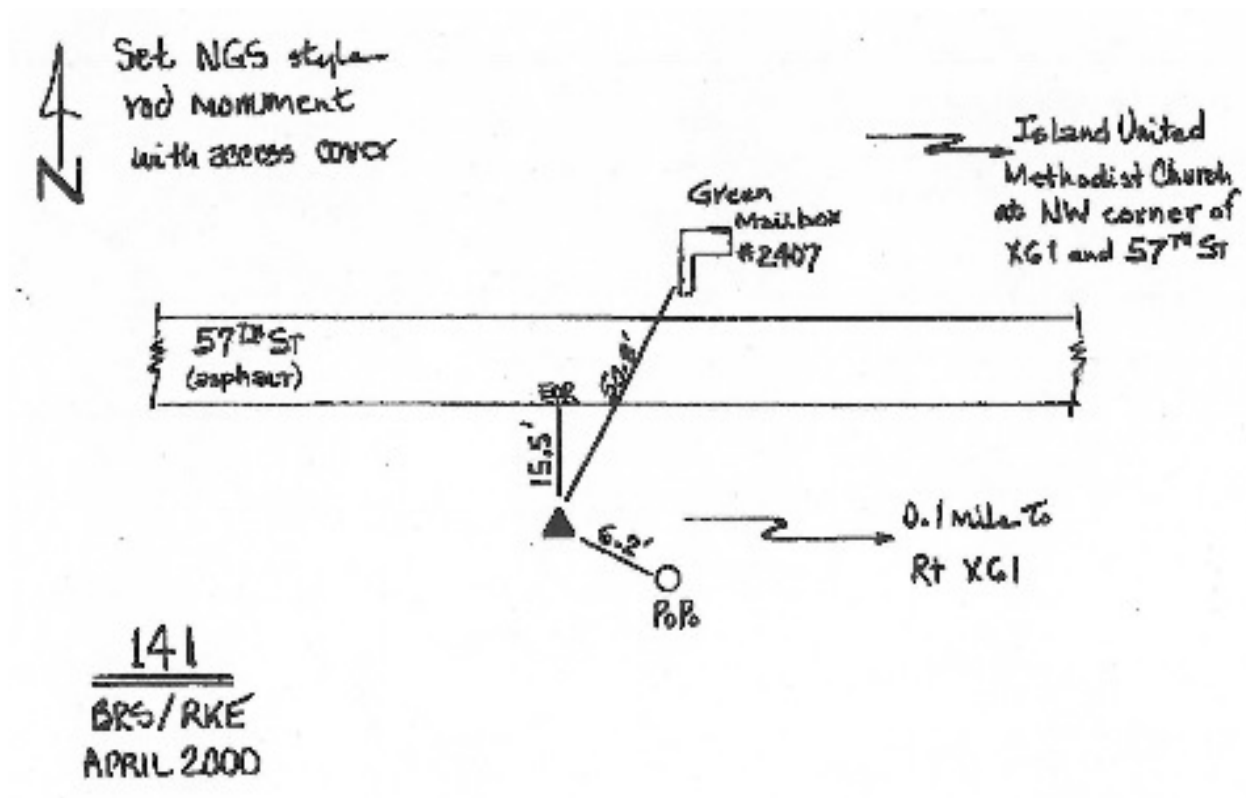
Designation: Muscatine Co. GPS Control Pt 2000-141 (Set by ASI in 2000)

NAD 83(NA2011) Latitude: **N41°21'47.05887"** Longitude: **W91°05'51.66418"**
NAVD 88 Ortho Height: **543.990sft** Ellip. Ht: **435.858sft** **Geoid12A**

Iowa South Zone (1402) Northing: **505718.763sft** Easting: **2299768.850sft**
Mapping Angle: **1°34'57"** Combination Scale Factor: **0.999931567**

IaRCS Zone 14 Northing: **6605577.439sft** Easting: **24541813.383sft**
Mapping Angle: **0°06'02"** Combination Scale Factor: **0.9999991996**

Monument Type: 5/8" dia. driven aluminum rod with a 2-1/2" dia. aluminum cap and permanent magnet encased in a 5" dia. PVC pipe with an aluminum access cover.



This document was prepared by DCI on November 10, 2014 for use by Muscatine County, Iowa